



**GHANA STATISTICAL SERVICE (GSS)**  
*Statistics for Development and Progress*

Statistical Bulletin

**PRODUCER PRICE INDEX (PPI)**  
**October 2013**

Ghana Statistical Service (GSS)

**Statistical Bulletin**

PRODUCER PRICE INDEX (PPI)

**OCTOBER, 2013**

**Date: November 27, 2013**

*For technical enquiries contact:*

*Ghana Statistical Service (GSS), Head Office*

*Industrial Statistics Section or Economic Statistics Division*

*Tel No: +233-302-664382*

*Email: [industrialstats@statsghana.gov.gh](mailto:industrialstats@statsghana.gov.gh)/[econsstats@statsghana.gov.gh](mailto:econsstats@statsghana.gov.gh)*

## **Producer Price Index (PPI)**

October 2013

### CONTENTS

HIGHLIGHTS FOR OCTOBER 2013	2
Table 1: Producer Price Index for October 2012 - October 2013	4
Table 2: Producer Price Index (Sep.2006=100) by sectors for October 2012 - October 2013	5
Table 3: Producer Price Index: Yearly Change Rates by Sector for October 2012 - October 2013 (%)	6
Table 4: Producer Price Index: Monthly Change Rates by Sector for October 2012 - October 2013 (%)	7
Table 5: Mining And Quarrying: Producer Price Index (Sept 2006=100) for October 2012 - October 2013	8
Table 6: Mining and Quarrying: Yearly Change Rates for October 2012- October 2013(%)	9
Table 7: Mining and Quarrying: Monthly Change Rates for October 2012 - October 2013 (%)	10
Table 8: Manufacturing Producer Price Index (Sept 2006=100) for October 2012 - October 2013	11
Table 9: Manufacturing: Yearly Change Rates for October 2012 - October 2013 (%)	17
Table 10: Manufacturing: Monthly Change Rates for October 2012 - October 2013 (%)	23
Table 11: Utilities: Producer Price Index (Sept 2006=100) for October 2012 -October 2013	28
Table 12: Utilities: Yearly Change Rates for October 2012 - October 2013 (%)	29
Table 13: Utilities: Monthly Change Rates for October 2012 - October 2013 (%)	30

## HIGHLIGHTS FOR OCTOBER 2013

### Producer Price Inflation Rate Increased to 11.6% in October 2013

The Producer Price Index (PPI) measures the average change over time in the prices received by domestic producers for the production of their goods and services. The PPI for Ghana reports the producer price indices with reference to September 2006, the base period.

This release shows the producer price changes since September 2006, as well as the annual (year-on-year) and monthly inflation rates, for all industry and three major sub-sectors of industry (Mining and Quarrying, Manufacturing, and Utilities) for the last twelve months. The figures for the month of September 2013 are provisional, and are subject to revision when additional data become available. All other indicators are final.

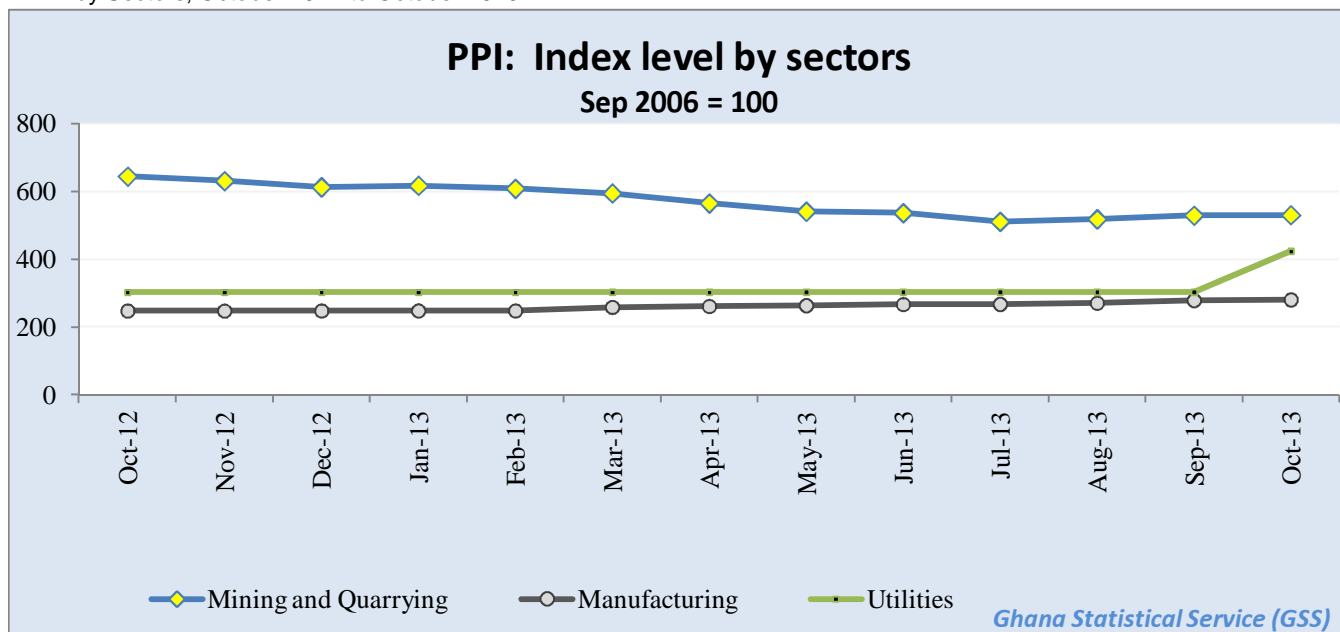
The Producer Price Inflation increased by 11.6 percent between October 2012 and October 2013 (year-on-year), representing an increase in producer inflation by 5.8 percentage points relative to the rate recorded in September 2013 (5.8%). The month-on-month change in producer prices between September 2013 and October 2013 was 6.2 percent.

In October 2013, the producer price inflation in the Mining and Quarrying subsector decreased by 0.8 percentage points over the September 2013 rate of -16.9 percent, to record -17.7 percent. Manufacturing, which constitutes more than two-thirds of total industry, increased by 0.1 percentage point to record 13.4 percent. The rate for the Utilities sub-sector rose by 40.3 percentage points relative to September 2013 (0.2%) to record 40.5 percent in October 2013.

During the 12-month period (October 2012 to October 2013), the highest year-on-year inflation of 19.1 percent for all industry was recorded in October 2012 and the lowest was in August 2013 (4.7%). Within the last quarter of 2012, the producer price inflation fluctuated until December 2012 when it started declining to record 9.1 percent in February 2013. In March 2013, the rate increased slightly to record 10.6 percent, and subsequently declined over a five-month period to record the lowest rate of 4.7 percent in August 2013. In September, however, the rate inched up to record 5.8 percent and further increased significantly to 11.6 percent in October, 2013.

During the month of October 2013, eight out of the sixteen major groups in the manufacturing sub-sector recorded inflation rates higher than the sector average of 13.4 percent. Manufacture of machinery and equipment n.e.c. recorded the highest inflation rate (76.0%) whilst producer prices in the manufacture of electrical machinery and apparatus n.e.c. recorded the lowest inflation rate (-5.6) over the one year period.

**PPI** by Sectors; October 2012 to October 2013



**Selected records:**

**All items PPI:** Annual rate was 11.6 percent; as compared to 5.8 percent last month.

**Petroleum Price Index:** Annual rate 30.0 percent; as compared to 33.6 percent last month.

**Manufacture of machinery and equipment n.e.c.:** Annual rate was 76.0 percent for October 2013, the same as last month

**Manufacture of furniture; manufacturing n.e.c.:** Annual rate was 31.5 percent for October as compared to 29.3 percent last month.

**Manufacture of chemical and chemical products.:** Annual rate was 18.1 percent for October 2013, as compare to 14.9 percent in September 2013.

**Electricity and Water Supply:** Annual rate is 39.1 percent; as compare to 0.2 percent in September 2013

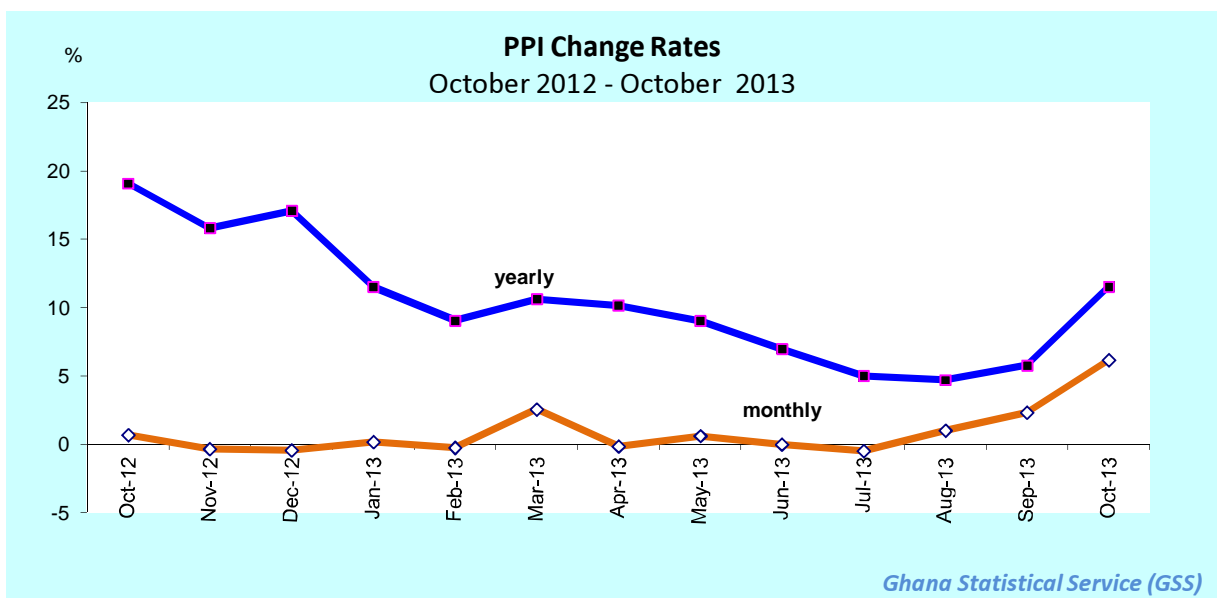
More detailed time series data is posted on the GSS website [[www.statsghana.gov.gh](http://www.statsghana.gov.gh)].

**The next release date is 18th December, 2013.**

**Table 1: Producer Price Index for October 2012 - October 2013**

Year / Month	Index level	Monthly	Yearly
	Sept 2006=100	Change Rate (%)	
2007 Average	113.4	2.4	.
2008 Average	149.4	0.8	32.4
2009 Average	172.5	2.1	15.4
2010 Average	204.7	1.4	18.8
2011 Average	242.6	1.1	18.7
2012 Average	284.2	1.3	17.1
October-12	297.4	0.7	19.1
November-12	296.5	-0.3	15.8
December-12	295.2	-0.4	17.1
January-13	295.7	0.2	11.5
February-13	295.0	-0.3	9.1
March-13	302.5	2.5	10.6
April-13	302.1	-0.1	10.2
May-13	303.9	0.6	9.0
June-13	303.9	0.0	7.0
July-13	302.4	-0.5	5.0
August-13	305.4	1.0	4.7
September-13	312.5	2.3	5.8
October-13	p 331.8	p 6.2	p 11.5

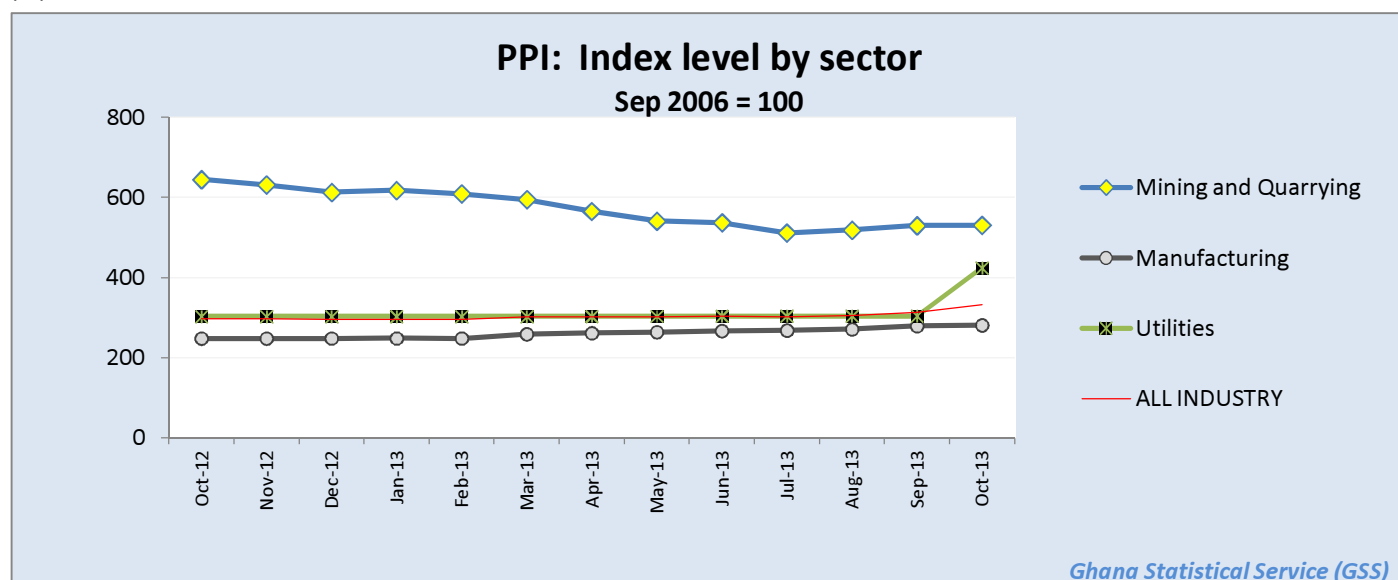
p: provisional



**Table 2: Producer Price Index (Sep.2006=100) by sectors for October 2012 - October 2013**

Year / Month	Mining and Quarrying	Manufacturing	Utilities	ALL INDUSTRY
<i>ISIC</i>	<i>C</i>	<i>D</i>	<i>E</i>	<i>C+D+E</i>
<i>weight</i>	13.97	69.75	16.28	100.00
2007 average	134.6	108.1	115.3	113.4
2008 average	191.4	139.0	157.1	149.4
2009 average	282.2	156.6	159.4	172.5
2010 average	349.7	176.3	226.0	204.7
2011 average	467.0	200.5	281.3	242.6
2012 average	584.2	237.7	301.9	284.2
October-2012	644.6	248.2	303.2	297.4
November-2012	631.2	248.2	303.1	296.5
December-2012	612.9	248.3	303.1	295.2
January-2013	617.6	248.5	303.2	295.7
February-2013	608.8	248.4	303.2	295.0
March-2013	594.7	259.1	303.2	302.5
April-2013	565.3	261.6	303.3	302.1
May-2013	541.3	264.2	303.5	302.0
June-2013	536.8	267.1	303.7	303.9
July-2013	511.2	268.1	303.7	302.4
August-2013	518.5	271.2	303.7	305.4
September-2013	529.6	279.1	303.8	312.5
October-2013	p 530.5	p 281.4	p 424.2	p 331.8

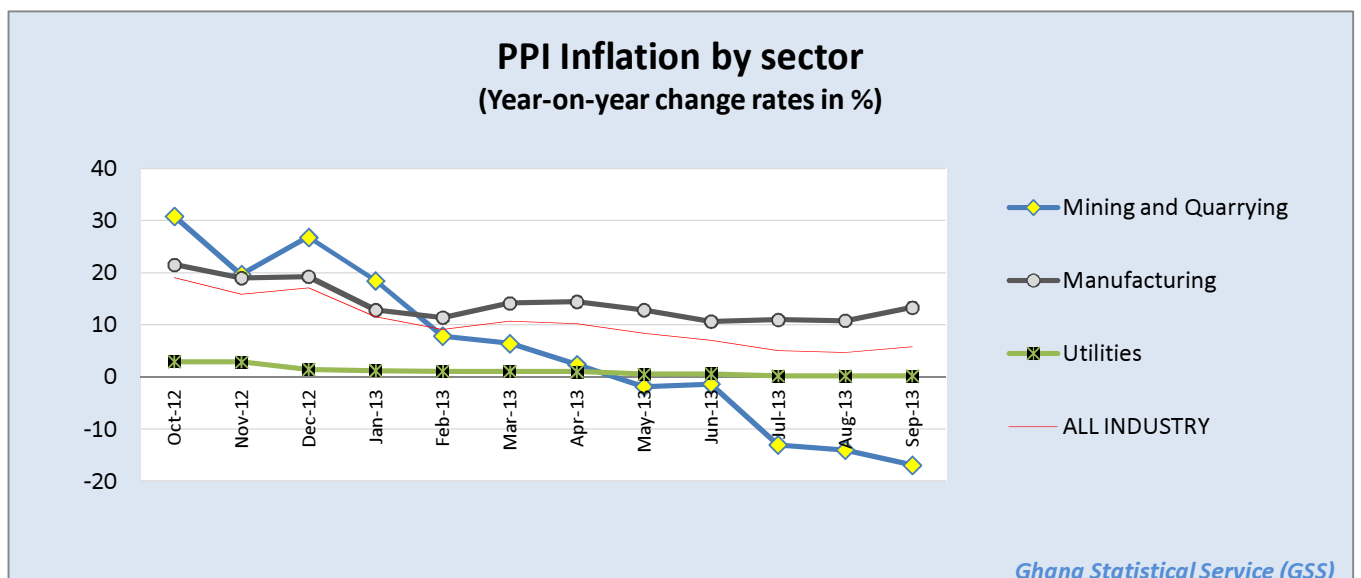
*p: provisional*



**Table 3: Producer Price Index: Yearly Change Rates by Sector for October 2012 - October 2013 (%)**

Year / Month	Mining and Quarrying	Manufacturing	Utilities	ALL INDUSTRY
<i>ISIC</i>	<i>C</i>	<i>D</i>	<i>E</i>	<i>C+D+E</i>
<i>weight</i>	13.97	69.75	16.28	100.00
2008 average	43.2	28.6	39.4	32.4
2009 average	47.3	12.7	1.4	15.4
2010 average	24.3	13.3	41.7	18.8
2011 average	33.7	13.7	32.7	18.7
2012 average	25.5	18.5	7.4	17.1
October-2012	30.8	21.5	2.9	19.1
November-2012	19.6	19.0	2.9	15.8
December-2012	26.8	19.3	1.5	17.1
January-2013	18.5	12.8	1.2	11.5
February-2013	7.8	11.4	1.1	9.1
March-2013	6.4	14.1	1.0	10.6
April-2013	2.4	14.4	1.0	10.2
May-2013	-1.9	12.8	0.5	8.3
June-2013	-1.4	10.6	0.6	7.0
July-2013	-13.1	10.9	0.2	5.0
August-2013	-14.1	10.8	0.2	4.7
September-2013	-16.9	13.3	0.2	5.8
October-2013	p -17.7	p 13.4	p 39.9	p 11.5

*p: provisional*

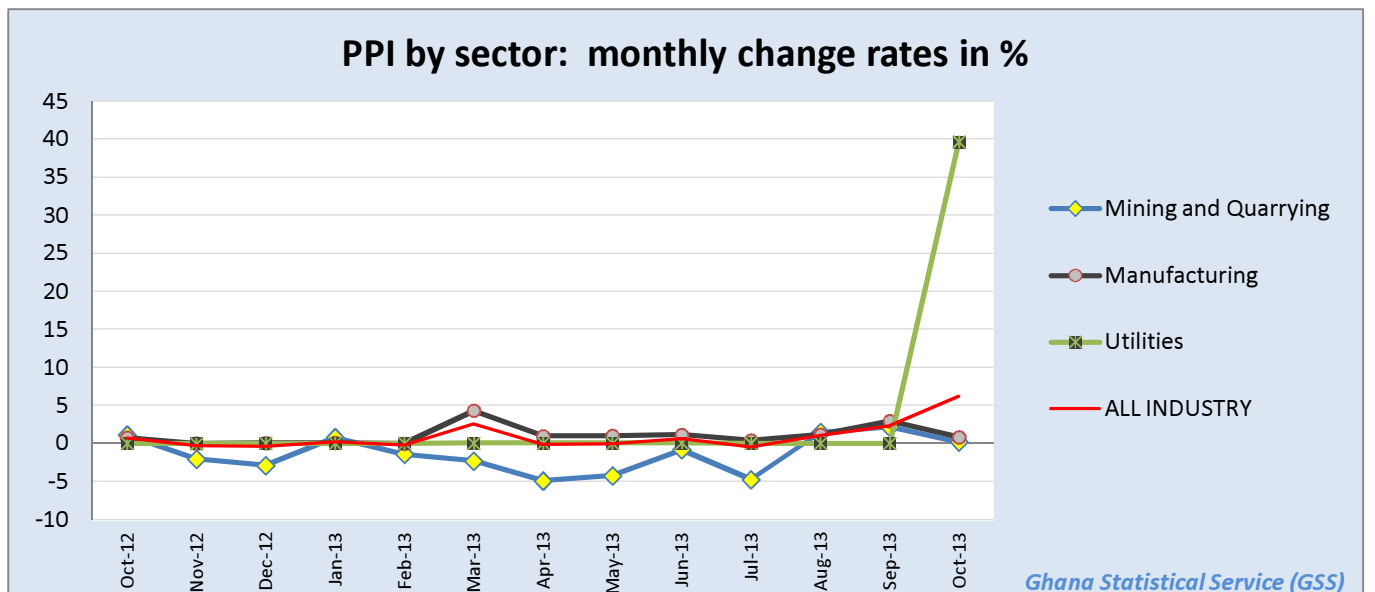




**Table 4: Producer Price Index: Monthly Change Rates by Sector for October 2012 - October 2013 (%)**

Year / Month	Mining and Quarrying	Manufacturing	Utilities	ALL INDUSTRY
<i>ISIC</i>	<i>C</i>	<i>D</i>	<i>E</i>	<i>C+D+E</i>
<i>weight</i>	13.97	69.75	16.28	100.00
2007 average	3.8	1.6	4.1	2.4
2008 average	1.8	0.9	0.1	0.8
2009 average	4.3	2.1	0.1	2.1
2010 average	1.9	0.4	6.0	1.4
2011 average	1.5	1.2	0.7	1.1
2012 average	2.1	1.5	0.1	1.3
October-2012	1.1	0.7	0.0	0.7
November-2012	-2.1	0.0	0.0	-0.3
December-2012	-2.9	0.0	0.0	-0.4
January-2013	0.8	0.1	0.0	0.2
February-2013	-1.4	0.0	0.0	-0.3
March-2013	-2.3	4.3	0.0	2.5
April-2013	-4.9	0.9	0.0	-0.1
May-2013	-4.3	1.0	0.0	0.0
June-2013	-0.8	1.1	0.1	0.6
July-2013	-4.8	0.4	0.0	-0.5
August-2013	1.4	1.1	0.0	1.0
September-2013	2.1	2.9	0.0	2.3
October-2013	p 0.2	p 0.8	p 39.7	p 6.2

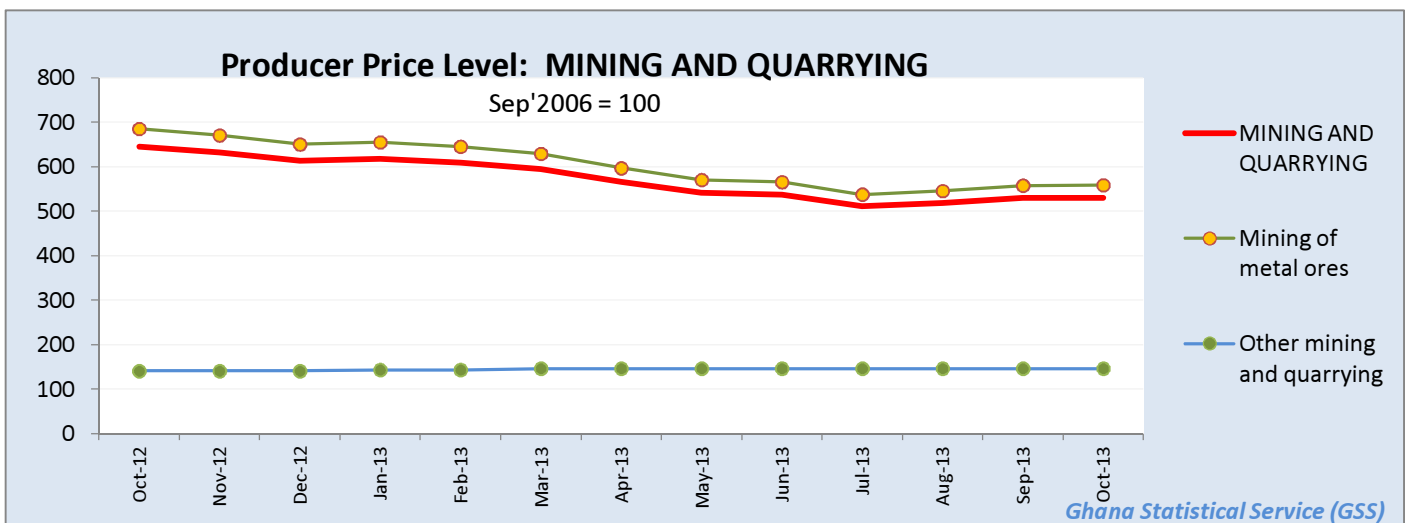
*p: provisional*



**Table 5: Mining And Quarrying: Producer Price Index (Sept 2006=100) for October 2012 - October 2013**

Year / Month	Mining and Quarrying	Mining of metal ores	Mining of non-ferrous metal ores	Other mining and quarrying	Quarrying of stone, sand & clay	Mining and quarrying n.e.c.
<i>ISIC</i>	<i>C</i>	<i>C13</i>	<i>C132</i>	<i>C14</i>	<i>C141</i>	<i>C142</i>
<i>weight</i>	<b>100.00</b>	<b>95.01</b>	<b>95.01</b>	<b>4.99</b>	<b>3.42</b>	<b>0.87</b>
2007 average	<b>134.6</b>	<b>136.1</b>	136.1	<b>98.9</b>	93.5	110.3
2008 average	<b>191.4</b>	<b>195.7</b>	195.7	<b>117.0</b>	106.5	145.5
2009 average	<b>282.2</b>	<b>292.3</b>	292.3	<b>118.9</b>	114.4	138.3
2010 average	<b>349.7</b>	<b>367.1</b>	367.1	<b>100.8</b>	92.6	157.9
2011 average	<b>467.0</b>	<b>494.9</b>	494.9	<b>107.7</b>	99.1	156.3
2012 average	<b>584.2</b>	<b>618.7</b>	618.7	<b>140.7</b>	138.8	148.4
October-2012	<b>644.6</b>	<b>685.2</b>	685.2	<b>141.0</b>	139.2	148.4
November-2012	<b>631.2</b>	<b>670.4</b>	670.4	<b>141.0</b>	139.2	148.4
December-2012	<b>612.9</b>	<b>650.2</b>	650.2	<b>141.0</b>	139.2	148.4
January-2013	<b>617.6</b>	<b>654.9</b>	654.9	<b>143.5</b>	139.2	161.8
February-2013	<b>608.8</b>	<b>645.2</b>	645.2	<b>143.5</b>	139.2	161.8
March-2013	<b>594.7</b>	<b>629.1</b>	629.1	<b>146.6</b>	142.9	161.8
April-2013	<b>565.3</b>	<b>596.8</b>	596.8	<b>146.6</b>	143.0	161.8
May-2013	<b>541.3</b>	<b>570.4</b>	570.4	<b>146.6</b>	143.0	161.8
June-2013	<b>536.8</b>	<b>565.5</b>	565.5	<b>146.6</b>	143.0	161.8
July-2013	<b>511.2</b>	<b>537.5</b>	537.5	<b>146.6</b>	143.0	161.8
August-2013	<b>518.5</b>	<b>545.5</b>	545.5	<b>146.6</b>	143.0	161.8
September-2013	<b>529.6</b>	<b>557.6</b>	557.6	<b>146.6</b>	143.0	161.8
October-2013	<b>p 530.5</b>	<b>p 558.6</b>	p 558.6	<b>p 146.6</b>	p 143.0	p 161.8

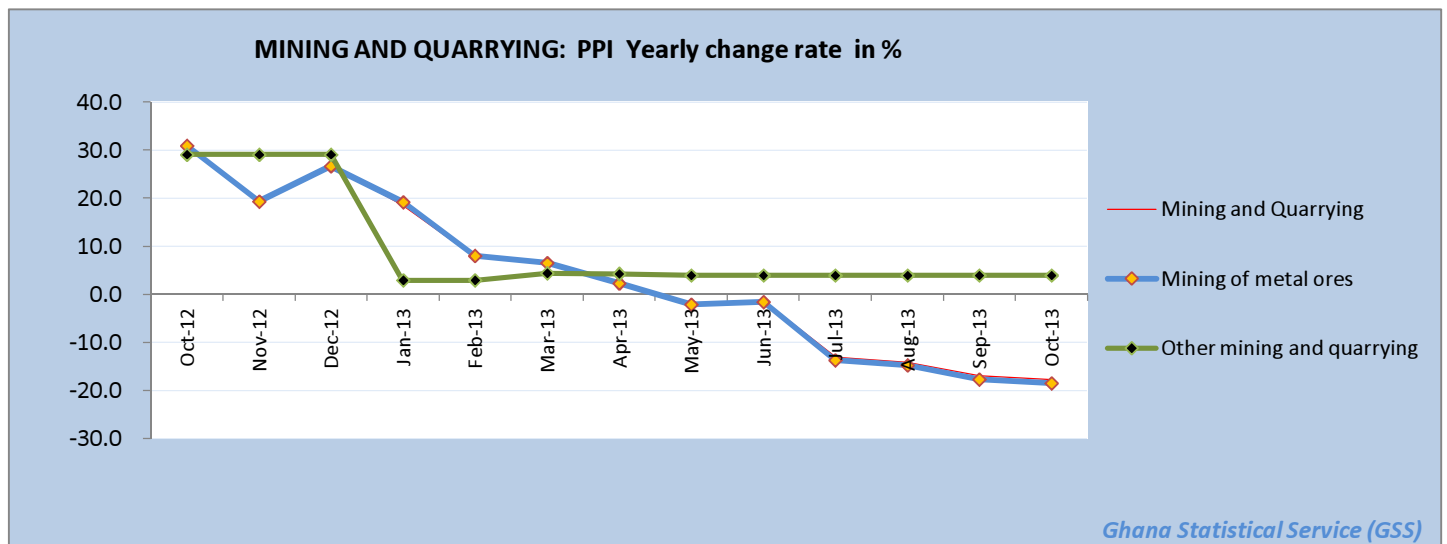
*p: provisional*



**Table 6: Mining and Quarrying: Yearly Change Rates for October 2012- October 2013(%)**

Year / Month	Mining and Quarrying	Mining of metal ores	Mining of non-ferrous metal ores	Other mining and quarrying	Quarrying of stone, sand & clay	Mining and quarrying n.e.c.
ISIC	C	C13	C132	C14	C141	C142
weight	100.00	95.01	95.01	4.99	3.42	0.87
2008 average	43.2	44.8	44.8	18.3	13.8	32.4
2009 average	47.3	49.2	49.2	2.3	8.8	-4.8
2010 average	24.3	26.1	26.1	-15.0	-18.8	14.4
2011 average	33.7	34.9	34.9	6.8	7.0	2.6
2012 average	25.5	25.4	25.4	30.7	40.1	-4.6
October-2012	30.8	30.9	30.9	29.1	37.7	0.0
November-2012	19.6	19.3	19.3	29.1	37.7	0.0
December-2012	26.8	26.7	26.7	29.1	37.7	0.0
January-2013	18.5	19.1	19.1	2.9	1.4	9.0
February-2013	7.8	8.0	8.0	2.9	1.4	9.0
March-2013	6.4	6.5	6.5	4.4	3.3	9.0
April-2013	2.4	2.3	2.3	4.3	3.1	9.0
May-2013	-1.9	-2.1	-2.1	4.0	2.7	9.0
June-2013	-1.4	-1.6	-1.6	4.0	2.7	9.0
July-2013	-13.1	-13.7	-13.7	4.0	2.7	9.0
August-2013	-14.1	-14.7	-14.7	4.0	2.7	9.0
September-2013	-16.9	-17.7	-17.7	4.0	2.7	9.0
October-2013	-p 17.7	-p 18.5	-p 18.5	p 4.0	p 2.7	p 9.0

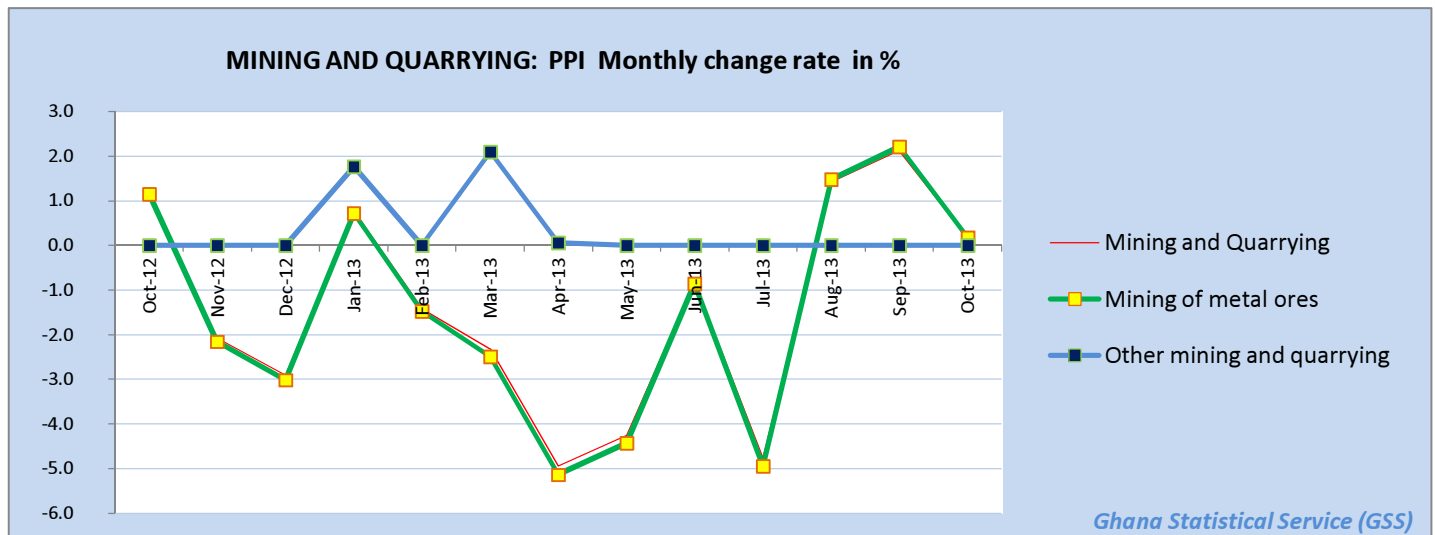
p: provisional



**Table 7: Mining and Quarrying: Monthly Change Rates for October 2012 - October 2013 (%)**

Year / Month	Mining and Quarrying	Mining of metal ores	Mining of non-ferrous metal ores	Other mining and quarrying	Quarrying of stone, sand & clay	Mining and quarrying n.e.c.
ISIC weight	C 100.00	C13 95.01	C132 95.01	C14 4.99	C141 3.42	C142 0.87
2007 average	3.8	4.0	4.0	-0.5	-0.6	0.4
2008 average	1.8	1.8	1.8	2.1	2.2	1.8
2009 average	4.3	4.5	4.5	-0.9	-1.0	-0.1
2010 average	1.9	2.0	2.0	-0.5	-0.8	3.4
2011 average	1.5	1.6	1.6	0.5	0.6	-1.9
2012 average	2.1	2.1	2.1	2.4	3.1	0.0
October-2012	1.1	1.1	1.1	0.0	0.0	0.0
November-2012	-2.1	-2.2	-2.2	0.0	0.0	0.0
December-2012	-2.9	-3.0	-3.0	0.0	0.0	0.0
January-2013	0.8	0.7	0.7	1.8	0.0	9.0
February-2013	-1.4	-1.5	-1.5	0.0	0.0	0.0
March-2013	-2.3	-2.5	-2.5	2.1	2.6	0.0
April-2013	-4.9	-5.1	-5.1	0.1	0.1	0.0
May-2013	-4.3	-4.4	-4.4	0.0	0.0	0.0
June-2013	-0.8	-0.9	-0.9	0.0	0.0	0.0
July-2013	-4.8	-4.9	-4.9	0.0	0.0	0.0
August-2013	1.4	1.5	1.5	0.0	0.0	0.0
September-2013	2.1	2.2	2.2	0.0	0.0	0.0
October-2013	p 0.2	p 0.2	p 0.2	p 0.0	p 0.0	p 0.0

p: provisional



**Table 8: Manufacturing Producer Price Index (Sept 2006=100) for October 2012 - October 2013**

Year / Month	Manufacturing	Manufacture of food products and beverages	Production, processing, preservation of meat, fish, fruit, vegetables, oils and fats	Manufacture of dairy products	Manufacture of grain mill products, starch products, and prepared animal feeds	Manufacture of other food products	Manufacture of beverages	Manufacture of textiles	Spinning, weaving and finishing of textiles
<i>ISIC</i>	<i>D</i>	<i>D15</i>	<i>D151</i>	<i>D152</i>	<i>D153</i>	<i>D154</i>	<i>D155</i>	<i>D17</i>	<i>D171</i>
<i>weight</i>	<b>100</b>	<b>25.64</b>	4.60	4.31	4.66	4.80	7.27	<b>4.27</b>	4.28
2007 average	<b>108.1</b>	<b>109.8</b>	122.0	105.9	126.4	110.4	101.6	<b>101.6</b>	101.6
2008 average	<b>139.0</b>	<b>140.9</b>	164.7	122.8	208.3	136.2	122.1	<b>117.9</b>	117.9
2009 average	<b>156.6</b>	<b>170.3</b>	204.0	144.8	222.9	150.7	160.6	<b>139.1</b>	139.1
2010 average	<b>176.3</b>	<b>198.1</b>	199.6	173.2	232.8	184.7	211.9	<b>150.5</b>	150.5
2011 average	<b>200.5</b>	<b>222.0</b>	225.5	193.2	286.1	216.4	219.5	<b>189.5</b>	189.5
2012 average	<b>237.7</b>	<b>260.3</b>	285.3	216.3	329.3	221.7	278.2	<b>265.5</b>	265.5
October-2012	<b>248.2</b>	<b>281.5</b>	284.9	237.4	344.2	248.2	311.2	<b>291.7</b>	291.7
November-2012	<b>248.2</b>	<b>281.2</b>	281.7	238.4	344.2	246.8	311.2	<b>291.7</b>	291.7
December-2012	<b>248.3</b>	<b>281.3</b>	277.5	238.4	344.2	252.9	311.2	<b>291.7</b>	291.7
January-2013	<b>248.5</b>	<b>281.7</b>	280.0	238.4	344.2	252.5	311.2	<b>291.7</b>	291.7
February-2013	<b>248.4</b>	<b>281.6</b>	285.7	238.4	341.1	248.2	311.2	<b>291.7</b>	291.7
March-2013	<b>259.1</b>	<b>285.5</b>	292.5	247.6	335.2	247.7	314.1	<b>302.7</b>	302.7
April-2013	<b>261.6</b>	<b>286.7</b>	291.4	247.6	335.2	258.9	314.1	<b>302.7</b>	302.7
May-2013	<b>264.2</b>	<b>288.1</b>	293.7	247.6	335.2	267.7	314.1	<b>302.7</b>	302.7
June-2013	<b>267.1</b>	<b>288.8</b>	298.9	247.6	335.2	272.5	311.2	<b>302.7</b>	302.7
July-2013	<b>268.1</b>	<b>289.0</b>	301.1	247.6	335.2	270.1	311.8	<b>302.7</b>	302.7
August-2013	<b>271.2</b>	<b>289.0</b>	298.8	247.6	335.2	272.9	311.8	<b>302.7</b>	302.7
September-2013	<b>279.1</b>	<b>297.2</b>	348.0	247.6	335.2	285.6	311.8	<b>314.0</b>	314.0
October-2013	<b>p 281.4</b>	<b>p 306.0</b>	p 356.4	p 247.6	p 364.1	p 285.9	p 324.5	<b>p 314.0</b>	p 314.0

*p: provisional*

**Table 8: Manufacturing Producer Price Index (Sept 2006=100) for October 2012 - October 2013**

*contd.*

Year / Month	Tanning of leather; manu facture of luggage, etc	Manufacture of footwear	Manufacture of wood an of articles of straw etc.	Sawmilling and planing of wood	Manufacture of products of wood, cork, straw etc.	Manufacture of paper and paper products	Manufacture of paper and paper products	Publishing, printing and reproduction of rec. media	Publishing	Printing and service activities ...
<i>ISIC</i>	<b>D19</b>	<i>D192</i>	<b>D20</b>	<i>D201</i>	<i>D202</i>	<b>D21</b>	<i>D210</i>	<b>D22</b>	<i>D221</i>	<i>D222</i>
<i>weight</i>	<b>0.12</b>	<i>0.12</i>	<b>9.03</b>	<i>4.94</i>	<i>4.10</i>	<b>0.62</b>	<i>0.62</i>	<b>1.14</b>	<i>0.40</i>	<i>0.74</i>
2007 average	<b>112.8</b>	112.8	<b>112.3</b>	109.6	117.7	<b>109.3</b>	109.3	<b>102.2</b>	103.7	101.2
2008 average	<b>146.1</b>	146.1	<b>140.6</b>	151.5	114.4	<b>124.6</b>	124.6	<b>115.4</b>	137.9	104.9
2009 average	<b>196.9</b>	196.9	<b>193.6</b>	223.1	136.1	<b>136.9</b>	136.9	<b>195.3</b>	185.6	202.8
2010 average	<b>218.0</b>	218.0	<b>183.2</b>	193.3	157.2	<b>153.0</b>	153.0	<b>232.0</b>	243.2	225.9
2011 average	<b>220.2</b>	220.2	<b>193.7</b>	197.8	183.6	<b>196.7</b>	196.7	<b>283.4</b>	322.7	264.3
2012 average	<b>240.7</b>	240.7	<b>205.4</b>	207.4	200.0	<b>199.3</b>	199.3	<b>369.9</b>	423.5	344.7
October-2012	<b>256.3</b>	256.3	<b>205.8</b>	205.4	206.9	<b>202.5</b>	202.5	<b>403.9</b>	509.5	355.8
November-2012	<b>266.6</b>	266.6	<b>205.8</b>	205.4	206.7	<b>202.9</b>	202.9	<b>415.2</b>	509.5	371.3
December-2012	<b>266.6</b>	266.6	<b>205.8</b>	205.4	206.7	<b>203.5</b>	203.5	<b>415.2</b>	509.5	371.3
January-2013	<b>270.0</b>	270.0	<b>206.8</b>	205.4	210.5	<b>203.5</b>	203.5	<b>415.2</b>	509.5	371.3
February-2013	<b>261.2</b>	261.2	<b>206.3</b>	205.4	208.5	<b>203.5</b>	203.5	<b>415.2</b>	509.5	371.3
March-2013	<b>271.4</b>	271.4	<b>207.5</b>	205.7	212.5	<b>218.6</b>	218.6	<b>431.9</b>	509.5	394.6
April-2013	<b>274.6</b>	274.6	<b>207.7</b>	205.9	212.6	<b>224.2</b>	224.2	<b>431.9</b>	509.5	394.6
May-2013	<b>273.3</b>	273.3	<b>207.8</b>	205.1	215.5	<b>224.2</b>	224.2	<b>431.9</b>	509.5	394.6
June-2013	<b>278.1</b>	278.1	<b>208.2</b>	205.1	217.0	<b>241.1</b>	241.1	<b>431.9</b>	509.5	394.6
July-2013	<b>278.1</b>	278.1	<b>208.3</b>	205.1	217.6	<b>241.1</b>	241.1	<b>435.8</b>	522.8	394.6
August-2013	<b>278.1</b>	278.1	<b>208.4</b>	205.1	218.1	<b>241.1</b>	241.1	<b>435.8</b>	522.8	394.6
September-2013	<b>285.4</b>	285.4	<b>208.5</b>	205.1	218.4	<b>234.6</b>	234.6	<b>445.3</b>	522.8	408.0
October-2013	<b>p 285.4</b>	<b>p 285.4</b>	<b>p 208.7</b>	p 205.1	p 219.1	<b>p 234.7</b>	p 234.7	<b>p 485.6</b>	p 522.8	p 466.5

*p: provisional*

**Table 8: Manufacturing Producer Price Index (Sept 2006=100) for October 2012 - October 2013**
*contd.*

Year / Month	Manufacture of coke, refined petroleum products etc.	Manufacture of refined petroleum products	Manufacture of chemicals and chemical products	Manufacture of basic chemicals	Manufacture of other chemical products	Manufacture of man-made fibres	Manufacture of rubber and plastics products	Manufacture of rubber products	Manufacture of plastics products
<i>ISIC</i>	<b>D23</b>	<i>D232</i>	<b>D24</b>	<i>D241</i>	<i>D242</i>	<i>D243</i>	<b>D25</b>	<i>D251</i>	<i>D252</i>
<i>weight</i>	22.94	22.94	<b>10.15</b>	0.54	9.45	0.16	<b>3.90</b>	0.76	3.14
2007 average	<b>99.3</b>	99.3	<b>111.6</b>	106.6	111.8	106.6	<b>103.4</b>	108.2	102.1
2008 average	<b>146.5</b>	146.5	<b>140.8</b>	162.3	141.2	109.6	<b>116.4</b>	132.7	113.0
2009 average	<b>134.2</b>	134.2	<b>150.8</b>	194.6	151.1	109.6	<b>144.4</b>	190.7	135.7
2010 average	<b>160.4</b>	160.4	<b>151.2</b>	227.9	151.1	109.6	<b>154.6</b>	193.5	146.5
2011 average	<b>202.7</b>	202.7	<b>163.2</b>	245.4	163.3	109.6	<b>174.2</b>	252.9	160.2
2012 average	<b>239.0</b>	239.0	<b>183.3</b>	260.9	183.9	109.6	<b>196.9</b>	248.5	186.9
October-2012	<b>237.4</b>	237.4	<b>188.2</b>	263.2	189.1	109.6	<b>202.8</b>	238.9	195.4
November-2012	<b>237.2</b>	237.2	<b>188.2</b>	263.2	189.1	109.6	<b>204.0</b>	238.4	196.9
December-2012	<b>237.1</b>	237.1	<b>188.2</b>	263.2	189.1	109.6	<b>204.0</b>	239.1	196.8
January-2013	<b>237.0</b>	237.0	<b>188.2</b>	263.2	189.1	109.6	<b>205.1</b>	245.6	196.9
February-2013	<b>237.0</b>	237.0	<b>187.8</b>	263.2	188.5	109.6	<b>205.5</b>	248.1	196.9
March-2013	<b>272.1</b>	272.1	<b>187.4</b>	264.8	188.1	109.6	<b>206.9</b>	250.5	198.2
April-2013	<b>271.4</b>	271.4	<b>195.9</b>	264.8	197.0	109.6	<b>215.7</b>	250.0	208.6
May-2013	<b>270.7</b>	270.7	<b>216.1</b>	264.8	217.9	109.6	<b>213.7</b>	235.9	208.9
June-2013	<b>281.9</b>	281.9	<b>216.1</b>	264.8	217.9	109.6	<b>215.0</b>	235.7	210.6
July-2013	<b>281.9</b>	281.9	<b>216.3</b>	278.7	217.9	109.6	<b>215.4</b>	237.9	210.6
August-2013	<b>296.8</b>	296.8	<b>216.2</b>	275.0	217.9	109.6	<b>213.7</b>	227.7	210.6
September-2013	<b>317.1</b>	317.1	<b>216.2</b>	275.2	217.9	109.6	<b>232.4</b>	226.4	233.8
October-2013	<b>p 308.5</b>	p 308.5	<b>p 222.3</b>	p 275.5	p 224.2	p 109.6	<b>p 235.7</b>	p 231.9	p 236.6

*p: provisional*

**Table 8: Manufacturing Producer Price Index (Sept 2006=100) for October 2012 - October 2013**
*contd.*

Year / Month	Manufacture of other non-metallic min. products	Manufacture of non-metallic mineral products n.e.c.	Manufacture of basic metals	Manufacture of basic iron and steel	Manufacture of basic precious and non-ferrous metals	Manufacture of fabricated metal products, ...	Manufacture of structural metal products, tanks, reservoirs ...	Manufacture of other fabricated metal products ...	Manufacture of machinery ... n.e.c.	Manufacture of special-purpose machinery
<i>ISIC</i>	<b>D26</b>	<i>D269</i>	<b>D27</b>	<i>D271</i>	<i>D272</i>	<b>D28</b>	<i>D281</i>	<i>D289</i>	<b>D29</b>	<i>D292</i>
<i>weight</i>	<b>8.20</b>	<i>8.20</i>	<b>5.02</b>	<i>2.02</i>	<i>2.65</i>	<b>3.70</b>	<i>1.55</i>	<i>2.15</i>	<b>0.42</b>	<i>0.42</i>
2007 average	<b>109.8</b>	109.8	<b>110.5</b>	118.1	106.9	<b>146.0</b>	138.9	151.1	<b>99.7</b>	99.7
2008 average	<b>130.0</b>	130.0	<b>137.8</b>	176.5	116.0	<b>186.1</b>	178.9	192.9	<b>167.7</b>	167.7
2009 average	<b>168.7</b>	168.7	<b>148.2</b>	178.2	128.8	<b>224.3</b>	217.4	230.4	<b>216.1</b>	216.1
2010 average	<b>177.9</b>	177.9	<b>161.0</b>	187.6	145.4	<b>262.0</b>	264.8	260.9	<b>278.3</b>	278.3
2011 average	<b>185.0</b>	185.0	<b>179.5</b>	232.4	152.2	<b>266.8</b>	268.7	265.4	<b>347.4</b>	347.4
2012 average	<b>246.6</b>	246.6	<b>205.0</b>	259.9	171.3	<b>315.4</b>	333.8	301.9	<b>384.3</b>	384.3
October-2012	<b>263.6</b>	263.6	<b>214.3</b>	260.1	184.9	<b>338.4</b>	356.6	325.7	<b>384.3</b>	384.3
November-2012	<b>263.6</b>	263.6	<b>214.0</b>	260.0	184.5	<b>338.1</b>	356.6	325.2	<b>384.3</b>	384.3
December-2012	<b>263.6</b>	263.6	<b>214.0</b>	260.0	184.5	<b>337.3</b>	354.8	325.2	<b>384.3</b>	384.3
January-2013	<b>263.6</b>	263.6	<b>214.1</b>	260.1	184.7	<b>338.1</b>	354.8	326.5	<b>384.3</b>	384.3
February-2013	<b>263.4</b>	263.4	<b>214.2</b>	260.1	184.8	<b>338.1</b>	354.3	326.8	<b>384.3</b>	384.3
March-2013	<b>263.8</b>	263.8	<b>213.2</b>	265.2	180.5	<b>336.0</b>	354.4	323.1	<b>384.3</b>	384.3
April-2013	<b>266.7</b>	266.7	<b>213.5</b>	265.2	180.9	<b>340.9</b>	361.6	326.6	<b>384.3</b>	384.3
May-2013	<b>266.9</b>	266.9	<b>213.8</b>	265.3	181.4	<b>340.3</b>	360.3	326.4	<b>384.3</b>	384.3
June-2013	<b>267.0</b>	267.0	<b>214.4</b>	265.3	182.3	<b>340.6</b>	359.6	327.4	<b>384.3</b>	384.3
July-2013	<b>267.9</b>	267.9	<b>212.6</b>	262.4	181.1	<b>353.4</b>	390.9	328.5	<b>676.2</b>	676.2
August-2013	<b>265.7</b>	265.7	<b>215.1</b>	269.4	181.2	<b>353.6</b>	390.9	328.8	<b>676.2</b>	676.2
September-2013	<b>265.7</b>	265.7	<b>215.2</b>	269.4	181.4	<b>360.1</b>	395.3	336.4	<b>676.2</b>	676.2
October-2013	<b>p 267.9</b>	p 267.9	<b>p 216.0</b>	p 269.7	p 182.4	<b>p 367.3</b>	p 397.1	p 347.0	<b>p 676.2</b>	p 676.2

*p: provisional*

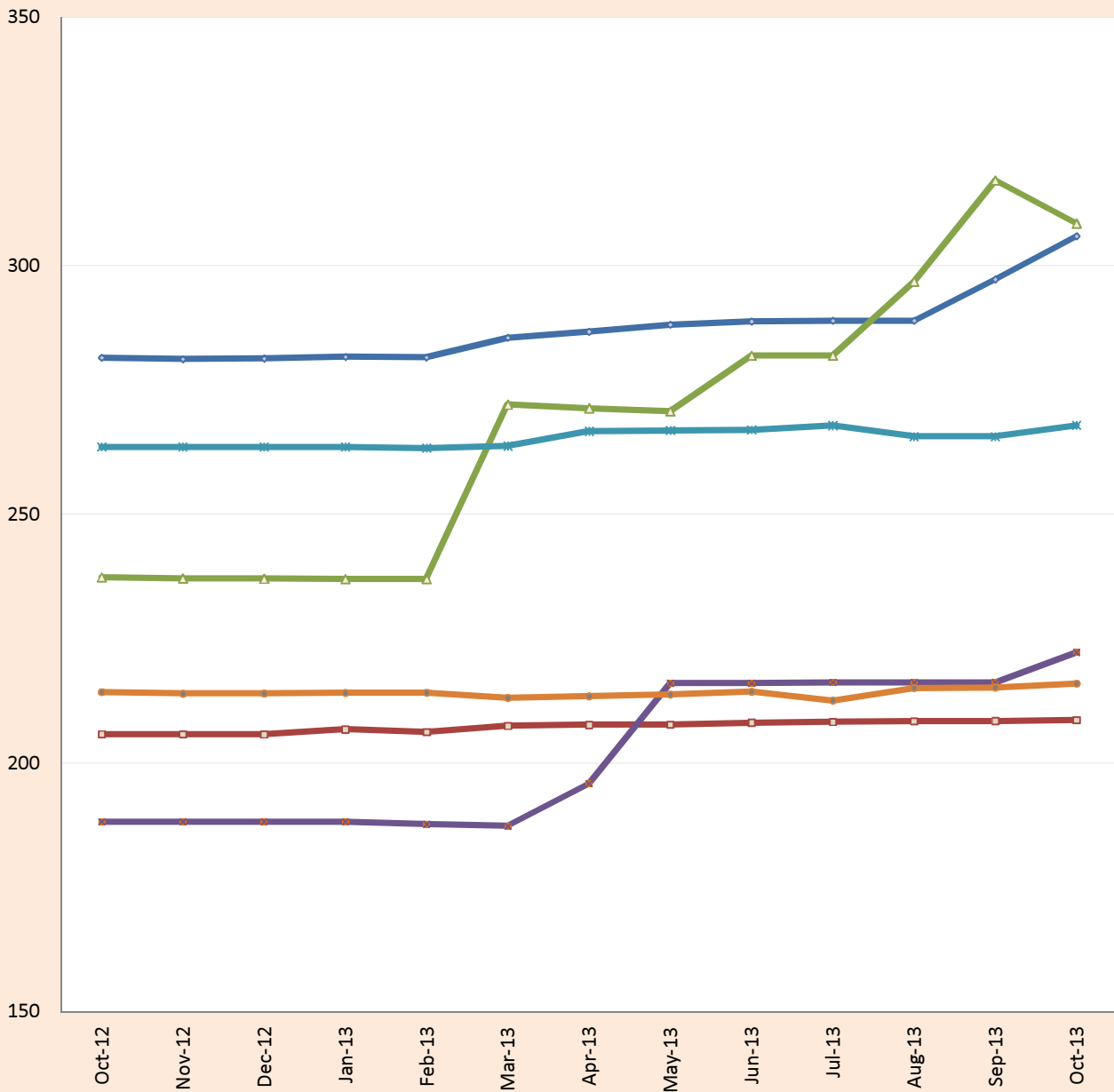


**Table 8: Manufacturing Producer Price Index (Sept 2006=100) for October 2012 - October 2013**
*contd.*

Year / Month	Manufacture of electrical machinery and apparatus n.e.c.	Manufacture of insulated wire and cable	Manufacture of motor vehicles, trailers and semi-trailers	Manufacture of bodies for motor vehicles, trailers and semi-trailers	Manufacture of furniture; manufacturing n.e.c.	Manufacture of furniture	Manufacturing n.e.c.
<i>ISIC</i>	<i>D31</i>	<i>D313</i>	<i>D34</i>	<i>D342</i>	<i>D36</i>	<i>D361</i>	<i>D369</i>
<i>weight</i>	<b>0.41</b>	0.41	<b>0.05</b>	0.05	<b>2.44</b>	2.33	0.11
2007 average	<b>108.2</b>	108.2	<b>124.1</b>	124.1	<b>113.9</b>	114.0	110.2
2008 average	<b>109.3</b>	109.3	<b>152.0</b>	152.0	<b>150.6</b>	150.7	144.6
2009 average	<b>115.3</b>	115.3	<b>191.5</b>	191.5	<b>167.6</b>	167.9	155.6
2010 average	<b>138.8</b>	138.8	<b>185.2</b>	185.2	<b>192.2</b>	192.5	185.7
2011 average	<b>168.8</b>	168.8	<b>213.1</b>	213.1	<b>221.0</b>	220.0	256.4
2012 average	<b>199.2</b>	199.2	<b>227.4</b>	227.4	<b>253.5</b>	252.3	293.2
October-2012	<b>208.2</b>	208.2	<b>237.1</b>	237.1	<b>262.8</b>	261.9	295.5
November-2012	<b>208.2</b>	208.2	<b>233.3</b>	233.3	<b>262.8</b>	261.9	295.5
December-2012	<b>208.2</b>	208.2	<b>233.0</b>	233.0	<b>267.0</b>	266.0	299.7
January-2013	<b>208.2</b>	208.2	<b>243.3</b>	243.3	<b>267.2</b>	266.2	299.7
February-2013	<b>208.2</b>	208.2	<b>245.8</b>	245.8	<b>267.7</b>	266.6	303.1
March-2013	<b>208.2</b>	208.2	<b>241.6</b>	241.6	<b>307.5</b>	307.7	302.6
April-2013	<b>208.2</b>	208.2	<b>243.0</b>	243.0	<b>314.1</b>	313.5	334.4
May-2013	<b>195.7</b>	195.7	<b>246.9</b>	246.9	<b>321.0</b>	318.9	398.4
June-2013	<b>195.7</b>	195.7	<b>253.8</b>	253.8	<b>321.3</b>	319.1	400.1
July-2013	<b>196.6</b>	196.6	<b>263.2</b>	263.2	<b>340.3</b>	338.6	400.1
August-2013	<b>196.6</b>	196.6	<b>265.9</b>	265.9	<b>340.4</b>	338.6	401.7
September-2013	<b>196.6</b>	196.6	<b>271.4</b>	271.4	<b>340.4</b>	338.6	401.7
October-2013	<b>p 196.6</b>	p 196.6	<b>p 279.5</b>	p 279.5	<b>p 345.6</b>	p 343.7	p 416.1

*p: provisional*

## PPI for Selected Subgroups in the Manufacturing Sector (Sept.2006=100)



- Manufacture of food products and beverages
- Manufacture of wood and articles of straw etc.
- ▲— Manufacture of coke, refined petroleum products etc.
- ◆— Manufacture of chemicals and chemical products
- ×— Manufacture of other non-metallic min. products
- Manufacture of basic metals

*Ghana Statistical Service (GSS)*

**Table 9: Manufacturing: Yearly Change Rates for October 2012 - October 2013 (%)**

Year / Month	<b>Manufacturing</b>	<b>Manufacture of food products and beverages</b>	Production, processing, preservation of meat, fish, fruit, vegetables, oils and fats	Manufacture of dairy products	Manufacture of grain mill products, starch products, and prepared animal feeds	Manufacture of other food products	Manufacture of beverages	<b>Manufacture of textiles</b>	Spinning, weaving and finishing of textiles
<i>ISIC</i>	<i>D</i>	<i>D15</i>	<i>D151</i>	<i>D152</i>	<i>D153</i>	<i>D154</i>	<i>D155</i>	<i>D17</i>	<i>D171</i>
<i>weight</i>	<b>100</b>	<b>25.64</b>	4.60	4.31	4.66	4.80	7.27	<b>4.27</b>	4.28
2007 average	<b>16.8</b>	<b>16.1</b>	24.9	15.6	49.3	14.3	0.7	<b>2.3</b>	2.3
2008 average	<b>28.6</b>	<b>28.3</b>	34.9	16.4	67.0	23.2	20.6	<b>16.0</b>	16.0
2009 average	<b>12.7</b>	<b>21.1</b>	24.1	17.9	8.4	11.0	31.5	<b>18.0</b>	18.0
2010 average	<b>13.3</b>	<b>16.7</b>	-0.9	20.3	4.5	22.9	33.0	<b>8.4</b>	8.4
2011 average	<b>13.7</b>	<b>12.1</b>	13.4	11.6	22.9	17.7	3.8	<b>25.9</b>	25.9
2012 average	<b>18.5</b>	<b>17.1</b>	<b>26.9</b>	<b>12.0</b>	<b>15.4</b>	<b>3.0</b>	<b>26.5</b>	<b>39.9</b>	<b>39.9</b>
October-2012	<b>21.5</b>	<b>25.5</b>	22.2	23.4	15.3	20.4	39.6	<b>40.1</b>	40.1
November-2012	<b>19.0</b>	<b>21.7</b>	14.4	23.9	15.3	18.0	28.0	<b>40.1</b>	40.1
December-2012	<b>19.3</b>	<b>19.4</b>	11.4	18.2	12.8	29.4	26.1	<b>40.1</b>	40.1
January-2013	<b>12.8</b>	<b>17.3</b>	7.1	14.7	10.5	29.8	26.1	<b>34.3</b>	34.3
February-2013	<b>11.4</b>	<b>16.0</b>	5.9	14.7	5.8	27.4	26.3	<b>28.2</b>	28.2
March-2013	<b>14.1</b>	<b>17.0</b>	5.6	19.1	4.0	25.9	27.5	<b>33.1</b>	33.1
April-2013	<b>14.4</b>	<b>16.6</b>	2.8	19.1	4.0	27.0	27.3	<b>33.1</b>	33.1
May-2013	<b>12.8</b>	<b>17.0</b>	0.6	21.7	4.0	29.6	26.3	<b>24.0</b>	24.0
June-2013	<b>10.6</b>	<b>13.1</b>	-0.5	21.7	4.0	31.2	11.7	<b>3.8</b>	3.8
July-2013	<b>10.9</b>	<b>11.1</b>	0.0	15.6	4.0	28.8	10.8	<b>3.8</b>	3.8
August-2013	<b>10.8</b>	<b>7.1</b>	1.0	15.6	1.6	9.8	4.6	<b>3.8</b>	3.8
September-2013	<b>13.3</b>	<b>7.9</b>	16.5	15.6	-2.6	14.2	0.3	<b>7.6</b>	7.6
October-2013	<b>p 13.4</b>	<b>p 8.7</b>	p 25.1	p 4.3	p 5.8	p 15.2	p 4.3	<b>p 7.6</b>	p 7.6

*p: provisional*

**Table 9: Manufacturing Producer Price Index Yearly Change Rates for October 2012 - October 2013 (%)**
*contd.*

Year / Month	Tanning of leather; manu facture of luggage, etc	Manufacture of footwear	Manufacture of wood an of articles of straw etc.	Sawmilling and planing of wood	Manufacture of products of wood, cork, straw etc.	Manufacture of paper and paper products	Manufacture of paper and paper products	Publishing, printing and reproduction of rec. media	Publishing	Printing and service activities ...
ISIC	D19	D192	D20	D201	D202	D21	D210	D22	D221	D222
weight	0.12	0.12	9.03	4.94	4.10	0.62	0.62	1.14	0.40	0.74
2007 average	<b>33.1</b>	33.1	<b>13.3</b>	7.0	23.9	<b>12.5</b>	12.5	<b>-1.2</b>	9.3	-6.4
2008 average	<b>31.2</b>	31.2	<b>24.9</b>	38.8	-2.4	<b>14.0</b>	14.0	<b>12.9</b>	32.2	3.8
2009 average	<b>35.9</b>	35.9	<b>45.1</b>	59.0	18.9	<b>10.6</b>	10.6	<b>69.2</b>	37.6	93.7
2010 average	<b>10.8</b>	10.8	<b>-5.2</b>	-13.2	15.9	<b>11.8</b>	11.8	<b>22.0</b>	34.6	14.8
2011 average	<b>1.1</b>	1.1	<b>5.8</b>	2.5	16.9	<b>28.9</b>	28.9	<b>22.2</b>	32.7	17.0
2012 average	<b>9.6</b>	9.6	<b>6.1</b>	4.9	9.0	<b>1.4</b>	1.4	<b>30.4</b>	31.6	30.4
October-2012	<b>18.7</b>	18.7	<b>7.4</b>	5.1	13.3	<b>1.3</b>	1.3	<b>42.0</b>	54.5	35.7
November-2012	<b>23.5</b>	23.5	<b>5.0</b>	3.7	8.1	<b>1.5</b>	1.5	<b>38.7</b>	54.5	30.8
December-2012	<b>13.7</b>	13.7	<b>4.4</b>	3.7	5.9	<b>1.8</b>	1.8	<b>37.3</b>	54.5	28.8
January-2013	<b>15.1</b>	15.1	<b>4.2</b>	2.0	9.5	<b>1.9</b>	1.9	<b>29.2</b>	44.4	21.6
February-2013	<b>15.9</b>	15.9	<b>1.1</b>	-1.8	9.4	<b>1.8</b>	1.8	<b>26.9</b>	44.4	18.3
March-2013	<b>20.9</b>	20.9	<b>1.6</b>	-1.7	11.3	<b>9.3</b>	9.3	<b>32.0</b>	44.4	25.7
April-2013	<b>22.3</b>	22.3	<b>1.4</b>	-1.6	10.0	<b>12.1</b>	12.1	<b>22.8</b>	38.1	15.2
May-2013	<b>21.1</b>	21.1	<b>1.2</b>	-1.4	9.2	<b>16.5</b>	16.5	<b>20.8</b>	38.1	12.3
June-2013	<b>18.3</b>	18.3	<b>1.3</b>	-1.4	9.7	<b>25.2</b>	25.2	<b>20.8</b>	38.1	12.3
July-2013	<b>18.3</b>	18.3	<b>0.2</b>	-2.0	6.3	<b>20.6</b>	20.6	<b>21.9</b>	41.7	12.3
August-2013	<b>16.8</b>	16.8	<b>0.0</b>	-2.0	5.7	<b>21.0</b>	21.0	<b>8.8</b>	2.6	12.3
September-2013	<b>11.4</b>	11.4	<b>0.0</b>	-2.0	5.6	<b>17.7</b>	17.7	<b>10.3</b>	2.6	14.7
October-2013	<b>p 11.4</b>	p 11.4	<b>p 1.4</b>	-p 0.2	p 5.9	<b>p 15.9</b>	p 15.9	<b>p 20.2</b>	p 2.6	p 31.1

*p: provisional*

**Table 9: Manufacturing: Yearly Change Rates for October 2012 - October 2013 (%)**

*contd.*

Year / Month	Manufacture of coke, refined petroleum products etc.	Manufacture of refined petroleum products	Manufacture of chemicals and chemical products	Manufacture of basic chemicals	Manufacture of other chemical products	Manufacture of man-made fibres	Manufacture of rubber and plastics products	Manufacture of rubber products	Manufacture of plastics products
<i>ISIC</i>	<b>D23</b>	D232	<b>D24</b>	D241	D242	D243	<b>D25</b>	D251	D252
<i>weight</i>	<b>22.94</b>	22.94	<b>10.15</b>	0.54	9.45	0.16	<b>3.90</b>	0.76	3.14
2007 average	<b>28.1</b>	28.1	<b>18.3</b>	3.5	18.7	9.5	<b>6.1</b>	11.2	3.7
2008 average	<b>50.3</b>	50.3	<b>26.5</b>	53.0	26.6	3.1	<b>12.5</b>	23.2	10.6
2009 average	<b>-6.7</b>	-6.7	<b>7.5</b>	19.9	7.4	0.0	<b>24.1</b>	45.1	20.3
2010 average	<b>24.4</b>	24.4	<b>0.3</b>	18.0	0.0	0.0	<b>7.5</b>	6.4	8.2
2011 average	<b>26.4</b>	26.4	<b>8.0</b>	7.7	8.1	0.0	<b>12.7</b>	31.2	9.4
2012 average	<b>17.9</b>	17.9	<b>12.8</b>	6.6	13.1	0.0	<b>13.0</b>	-1.6	16.7
October-2012	<b>16.6</b>	16.6	<b>10.3</b>	3.6	10.6	0.0	<b>16.6</b>	-6.5	22.6
November-2012	<b>16.4</b>	16.4	<b>1.5</b>	3.6	1.5	0.0	<b>15.2</b>	-7.6	21.1
December-2012	<b>16.4</b>	16.4	<b>13.0</b>	3.6	13.3	0.0	<b>13.7</b>	0.6	17.0
January-2013	<b>-1.3</b>	-1.3	<b>10.4</b>	3.6	10.7	0.0	<b>15.3</b>	8.9	16.7
February-2013	<b>-1.4</b>	-1.4	<b>9.9</b>	3.6	10.2	0.0	<b>14.5</b>	5.6	16.6
March-2013	<b>12.5</b>	12.5	<b>9.7</b>	4.2	10.0	0.0	<b>13.9</b>	-0.2	17.3
April-2013	<b>12.2</b>	12.2	<b>13.1</b>	0.6	13.5	0.0	<b>15.5</b>	-5.1	20.7
May-2013	<b>11.7</b>	11.7	<b>15.1</b>	0.6	15.6	0.0	<b>4.2</b>	-12.3	8.3
June-2013	<b>19.3</b>	19.3	<b>7.9</b>	0.6	8.1	0.0	<b>3.8</b>	-12.3	7.8
July-2013	<b>18.5</b>	18.5	<b>16.8</b>	5.9	17.3	0.0	<b>4.3</b>	-9.8	7.8
August-2013	<b>24.7</b>	24.7	<b>15.1</b>	4.5	15.5	0.0	<b>4.8</b>	-7.7	7.8
September-2013	<b>33.6</b>	33.6	<b>14.9</b>	4.6	15.3	0.0	<b>14.3</b>	-6.5	19.7
October-2013	<b>p 30.0</b>	p 30.0	<b>p 18.1</b>	p 4.7	p 18.6	p 0.0	<b>p 16.2</b>	-p 2.9	p 21.1

*p: provisional*

**Table 9: Manufacturing: Yearly Change Rates for October 2012 - October 2013 (%)**
*contd.*

Year / Month	Manufacture of other non-metallic min. products	Manufacture of non-metallic mineral products n.e.c.	Manufacture of basic metals	Manufacture of basic iron and steel	Manufacture of basic precious and non-ferrous metals	Manufacture of fabricated metal products, ...	Manufacture of structural metal products, tanks, reservoirs ...	Manufacture of other fabricated metal products ...	Manufacture of machinery ... n.e.c.	Manufacture of special-purpose machinery
ISIC	D26	D269	D27	D271	D272	D28	D281	D289	D29	D292
weight	8.20	8.20	5.02	2.02	2.65	3.70	1.55	2.15	0.42	0.42
2007 average	<b>12.3</b>	12.3	<b>8.2</b>	13.7	5.5	<b>42.1</b>	49.7	37.8	<b>-0.4</b>	-0.4
2008 average	<b>18.3</b>	18.3	<b>24.7</b>	50.0	8.5	<b>27.7</b>	29.4	27.6	<b>68.2</b>	68.2
2009 average	<b>29.8</b>	29.8	<b>9.0</b>	5.6	11.3	<b>20.4</b>	21.4	19.6	<b>37.8</b>	37.8
2010 average	<b>6.0</b>	6.0	<b>8.7</b>	5.4	12.9	<b>17.5</b>	23.0	13.6	<b>30.6</b>	30.6
2011 average	<b>4.0</b>	4.0	<b>11.6</b>	24.8	4.9	<b>2.0</b>	2.0	1.8	<b>24.8</b>	24.8
2012 average	<b>33.2</b>	33.2	<b>14.2</b>	12.1	12.5	<b>18.2</b>	24.2	13.7	<b>14.1</b>	14.1
October-2012	<b>36.5</b>	36.5	<b>17.2</b>	12.3	21.1	<b>26.3</b>	32.7	21.8	<b>0.0</b>	0.0
November-2012	<b>36.1</b>	36.1	<b>16.8</b>	12.3	20.3	<b>22.0</b>	22.9	21.6	<b>0.0</b>	0.0
December-2012	<b>35.9</b>	35.9	<b>17.2</b>	12.3	21.1	<b>21.7</b>	22.2	21.6	<b>0.0</b>	0.0
January-2013	<b>31.0</b>	31.0	<b>11.6</b>	2.1	19.3	<b>19.9</b>	18.8	21.1	<b>0.0</b>	0.0
February-2013	<b>26.8</b>	26.8	<b>10.3</b>	2.1	17.0	<b>18.0</b>	15.8	20.1	<b>0.0</b>	0.0
March-2013	<b>14.0</b>	14.0	<b>9.6</b>	4.1	13.9	<b>12.6</b>	14.9	11.2	<b>0.0</b>	0.0
April-2013	<b>14.9</b>	14.9	<b>9.4</b>	4.1	13.7	<b>13.2</b>	14.7	12.4	<b>0.0</b>	0.0
May-2013	<b>10.9</b>	10.9	<b>4.9</b>	-5.0	13.1	<b>8.2</b>	5.8	10.6	<b>0.0</b>	0.0
June-2013	<b>1.6</b>	1.6	<b>2.4</b>	2.0	2.7	<b>6.3</b>	5.6	7.3	<b>0.0</b>	0.0
July-2013	<b>1.4</b>	1.4	<b>1.5</b>	0.9	1.9	<b>10.3</b>	14.7	7.7	<b>76.0</b>	76.0
August-2013	<b>0.6</b>	0.6	<b>2.6</b>	3.6	1.9	<b>9.8</b>	13.7	7.6	<b>76.0</b>	76.0
September-2013	<b>0.6</b>	0.6	<b>2.6</b>	3.6	1.9	<b>10.6</b>	15.0	7.6	<b>76.0</b>	76.0
October-2013	<b>p 1.7</b>	p 1.7	<b>p 0.8</b>	p 3.7	-p 1.3	<b>p 8.5</b>	p 11.4	p 6.5	<b>p 76.0</b>	p 76.0

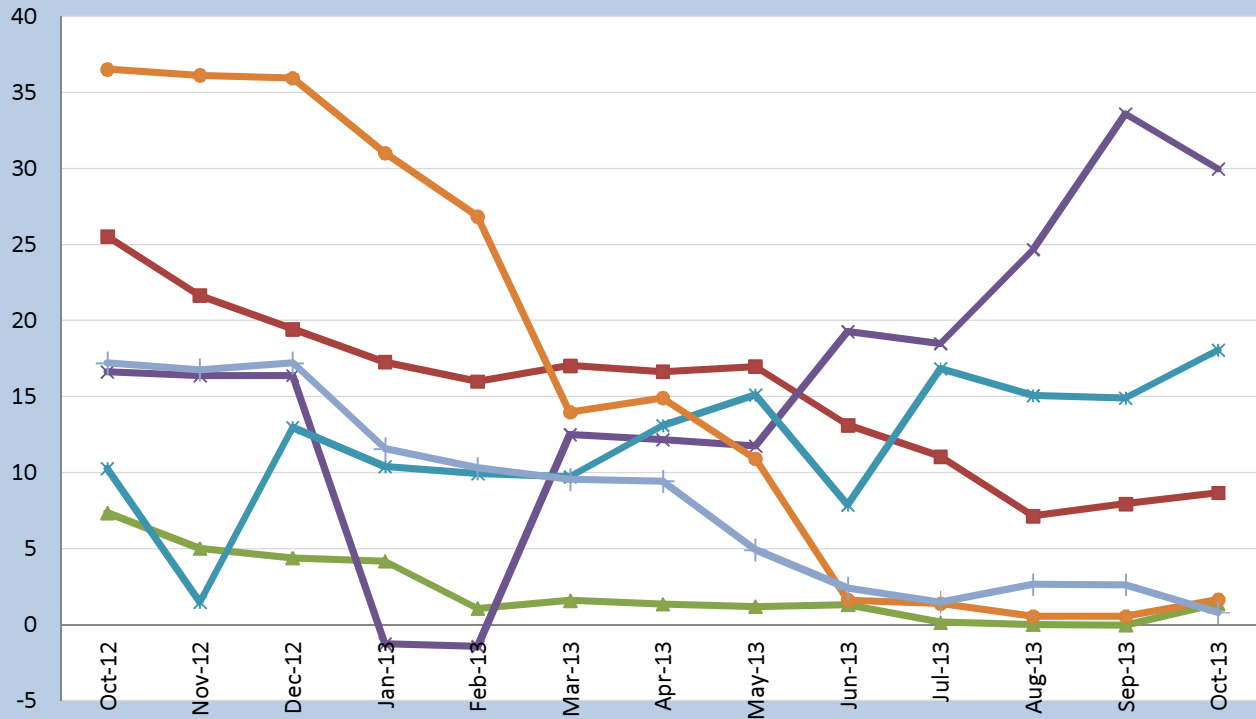
*p: provisional*

**Table 9: Manufacturing: Yearly Change Rates for October 2012 - October 2013 (%)**
*contd.*

Year / Month	Manufacture of electrical machinery and apparatus n.e.c.	Manufacture of insulated wire and cable	Manufacture of motor vehicles, trailers and semi-trailers	Manufacture of bodies for motor vehicles, trailers and semi-trailers	Manufacture of furniture; manufacturing n.e.c.	Manufacture of furniture	Manufacturing n.e.c.
<i>ISIC</i>	<b>D31</b>	<i>D313</i>	<b>D34</b>	<i>D342</i>	<b>D36</b>	<i>D361</i>	<i>D369</i>
<i>weight</i>	<b>0.41</b>	<i>0.41</i>	<b>0.05</b>	<i>0.05</i>	<b>2.44</b>	<i>2.33</i>	<i>0.11</i>
2007 average	<b>7.6</b>	7.6	<b>32.7</b>	32.7	<b>20.2</b>	20.4	13.2
2008 average	<b>1.1</b>	1.1	<b>22.7</b>	22.7	<b>32.4</b>	32.5	32.1
2009 average	<b>5.5</b>	5.5	<b>25.9</b>	25.9	<b>11.3</b>	11.4	8.7
2010 average	<b>20.2</b>	20.2	<b>-2.5</b>	-2.5	<b>15.0</b>	14.9	19.3
2011 average	<b>22.7</b>	22.7	<b>15.6</b>	15.6	<b>14.9</b>	14.3	38.0
2012 average	<b>18.1</b>	18.1	<b>6.8</b>	6.8	<b>14.8</b>	14.8	14.8
October-2012	<b>24.0</b>	24.0	<b>12.5</b>	12.5	<b>12.3</b>	12.2	0.8
November-2012	<b>30.1</b>	30.1	<b>10.3</b>	10.3	<b>12.1</b>	12.2	8.5
December-2012	<b>11.4</b>	11.4	<b>12.5</b>	12.5	<b>12.3</b>	12.4	10.1
January-2013	<b>11.4</b>	11.4	<b>17.7</b>	17.7	<b>13.2</b>	13.4	7.5
February-2013	<b>11.4</b>	11.4	<b>14.4</b>	14.4	<b>11.0</b>	11.2	5.2
March-2013	<b>11.4</b>	11.4	<b>10.6</b>	10.6	<b>27.0</b>	27.8	4.5
April-2013	<b>11.4</b>	11.4	<b>7.6</b>	7.6	<b>28.5</b>	29.0	13.4
May-2013	<b>-0.7</b>	-0.7	<b>6.7</b>	6.7	<b>29.4</b>	29.3	35.1
June-2013	<b>-0.1</b>	-0.1	<b>9.0</b>	9.0	<b>24.9</b>	24.6	35.7
July-2013	<b>-5.6</b>	-5.6	<b>14.3</b>	14.3	<b>32.2</b>	32.1	35.7
August-2013	<b>-5.6</b>	-5.6	<b>15.8</b>	15.8	<b>31.5</b>	31.4	35.9
September-2013	<b>-5.6</b>	-5.6	<b>15.3</b>	15.3	<b>29.3</b>	29.1	35.9
October-2013	<b>-p 5.6</b>	-p 5.6	<b>p 17.9</b>	p 17.9	<b>p 31.5</b>	p 31.2	p 40.8

*p: provisional*

## PPI Inflation for selected subgroups in the Manufacturing Sector (Year-on-year change rates in %)



- Manufacture of food products and beverages
- ▲ Manufacture of wood and articles of straw etc.
- × Manufacture of coke, refined petroleum products etc.
- ✱ Manufacture of chemicals and chemical products
- ◆ Manufacture of other non-metallic min. products
- + Manufacture of basic metals

*Ghana Statistical Service (GSS)*



**Table 10: Manufacturing: Monthly Change Rates for October 2012 - October 2013 (%)**

Year / Month	Manufacturing	Manufacture of food products and beverages	Production, processing, preservation of meat, fish, fruit, vegetables, oils and fats	Manufacture of dairy products	Manufacture of grain mill products, starch products, and prepared animal feeds	Manufacture of other food products	Manufacture of beverages	Manufacture of textiles	Spinning, weaving and finishing of textiles
ISIC	D	D15	D151	D152	D153	D154	D155	D17	D171
weight	100	25.64	4.60	4.31	4.66	4.80	7.27	4.27	4.28
2007 average	1.6	1.6	1.7	1.8	4.4	1.0	0.2	0.2	0.2
2008 average	0.9	1.8	2.5	0.2	2.9	2.4	2.2	1.6	1.6
2009 average	2.1	1.7	1.7	2.6	-0.8	1.3	2.3	1.6	1.6
2010 average	0.4	0.8	-0.1	0.7	0.6	1.9	1.6	1.0	1.0
2011 average	1.2	1.1	1.5	0.8	2.3	-0.8	1.5	1.9	1.9
2012 average	1.5	1.5	0.9	1.5	1.0	2.3	2.0	3.0	3.0
October-2012	0.7	2.2	-4.6	10.8	0.0	-0.8	0.1	0.0	0.0
November-2012	0.0	-0.1	-1.2	0.4	0.0	-0.6	0.0	0.0	0.0
December-2012	0.0	0.0	-1.5	0.0	0.0	2.5	0.0	0.0	0.0
January-2013	0.1	0.1	0.9	0.0	0.0	-0.2	0.0	0.0	0.0
February-2013	0.0	0.0	2.1	0.0	-0.9	-1.7	0.0	0.0	0.0
March-2013	4.3	1.4	2.4	3.9	-1.7	-0.2	0.9	3.8	3.8
April-2013	0.9	0.4	-0.4	0.0	0.0	4.5	0.0	0.0	0.0
May-2013	1.0	0.5	0.8	0.0	0.0	3.4	0.0	0.0	0.0
June-2013	1.1	0.2	1.8	0.0	0.0	1.8	-0.9	0.0	0.0
July-2013	0.4	0.1	0.7	0.0	0.0	-0.9	0.2	0.0	0.0
August-2013	1.1	0.0	-0.8	0.0	0.0	1.1	0.0	0.0	0.0
September-2013	2.9	2.9	16.5	0.0	0.0	4.6	0.0	3.7	3.7
October-2013	p 0.8	p 2.9	p 2.4	p 0.0	p 8.6	p 0.1	p 4.1	p 0.0	p 0.0

*p: provisional*

**Table 10: Manufacturing: Monthly Change Rates for October 2012 - October 2013 (%)**

*contd.*

Year / Month	Tanning of leather; manu facture of luggage, etc	Manufacture of footwear	Manufacture of wood an of articles of straw etc.	Sawmilling and planing of wood	Manufacture of products of wood, cork, straw etc.	Manufacture of paper and paper products	Manufacture of paper and paper products	Publishing, printing and reproduction of rec. media	Publishing	Printing and service activities ...
ISIC	D19	D192	D20	D201	D202	D21	D210	D22	D221	D222
weight	0.12	0.12	9.03	4.94	4.10	0.62	0.62	1.14	0.40	0.74
2007 average	<b>2.6</b>	2.6	<b>1.2</b>	0.6	2.2	<b>1.6</b>	1.6	<b>-1.6</b>	0.8	-2.6
2008 average	<b>3.3</b>	3.3	<b>5.6</b>	7.7	-0.6	<b>1.4</b>	1.4	<b>1.2</b>	4.3	-0.2
2009 average	<b>0.2</b>	0.2	<b>-0.9</b>	-0.7	2.2	<b>0.1</b>	0.1	<b>7.4</b>	3.8	10.1
2010 average	<b>1.1</b>	1.1	<b>-0.1</b>	-0.8	0.8	<b>1.7</b>	1.7	<b>-0.5</b>	0.0	-0.9
2011 average	<b>0.5</b>	0.5	<b>0.6</b>	0.3	1.4	<b>1.5</b>	1.5	<b>2.1</b>	3.0	1.7
2012 average	<b>1.1</b>	1.1	<b>0.4</b>	0.3	0.5	<b>0.2</b>	0.2	<b>2.7</b>	4.1	2.2
October-2012	<b>0.0</b>	0.0	<b>-1.3</b>	-1.8	0.0	<b>1.6</b>	1.6	<b>0.0</b>	0.0	0.0
November-2012	<b>4.0</b>	4.0	<b>0.0</b>	0.0	-0.1	<b>0.2</b>	0.2	<b>2.8</b>	0.0	4.3
December-2012	<b>0.0</b>	0.0	<b>0.0</b>	0.0	0.0	<b>0.3</b>	0.3	<b>0.0</b>	0.0	0.0
January-2013	<b>1.3</b>	1.3	<b>0.5</b>	0.0	1.8	<b>0.0</b>	0.0	<b>0.0</b>	0.0	0.0
February-2013	<b>-3.2</b>	-3.2	<b>-0.3</b>	0.0	-0.9	<b>0.0</b>	0.0	<b>0.0</b>	0.0	0.0
March-2013	<b>3.9</b>	3.9	<b>0.6</b>	0.1	1.9	<b>7.4</b>	7.4	<b>4.0</b>	0.0	6.3
April-2013	<b>1.2</b>	1.2	<b>0.1</b>	0.1	0.0	<b>2.6</b>	2.6	<b>0.0</b>	0.0	0.0
May-2013	<b>-0.5</b>	-0.5	<b>0.0</b>	-0.4	1.4	<b>0.0</b>	0.0	<b>0.0</b>	0.0	0.0
June-2013	<b>1.8</b>	1.8	<b>0.2</b>	0.0	0.7	<b>7.5</b>	7.5	<b>0.0</b>	0.0	0.0
July-2013	<b>0.0</b>	0.0	<b>0.1</b>	0.0	0.3	<b>0.0</b>	0.0	<b>0.9</b>	2.6	0.0
August-2013	<b>0.0</b>	0.0	<b>0.1</b>	0.0	0.2	<b>0.0</b>	0.0	<b>0.0</b>	0.0	0.0
September-2013	<b>2.6</b>	2.6	<b>0.0</b>	0.0	0.1	<b>-2.7</b>	-2.7	<b>2.2</b>	0.0	3.4
October-2013	<b>p 0.0</b>	p 0.0	<b>p 0.1</b>	p 0.0	p 0.3	<b>p 0.0</b>	p 0.0	<b>p 9.1</b>	p 0.0	p 14.3

*p: provisional*

**Table 10: Manufacturing: Monthly Change Rates for October 2012 - October 2013 (%)**
*contd.*

Year / Month	Manufacture of coke, refined petroleum products etc.	Manufacture of refined petroleum products	Manufacture of chemicals and chemical products	Manufacture of basic chemicals	Manufacture of other chemical products	Manufacture of man-made fibres	Manufacture of rubber and plastics products	Manufacture of rubber products	Manufacture of plastics products
<i>ISIC</i>	<b>D23</b>	D232	<b>D24</b>	D241	D242	D243	<b>D25</b>	D251	D252
<i>weight</i>	<b>22.94</b>	22.94	<b>10.15</b>	0.54	9.45	0.16	<b>3.90</b>	0.76	3.14
2007 average	<b>3.8</b>	3.8	<b>1.6</b>	1.1	1.6	0.8	<b>0.6</b>	1.8	0.3
2008 average	<b>-1.5</b>	-1.5	<b>1.9</b>	3.0	1.9	0.0	<b>0.9</b>	0.0	1.2
2009 average	<b>4.6</b>	4.6	<b>0.2</b>	2.7	0.2	0.0	<b>2.5</b>	10.3	1.4
2010 average	<b>0.0</b>	0.0	<b>-0.1</b>	0.0	-0.1	0.0	<b>0.2</b>	-0.3	0.5
2011 average	<b>2.1</b>	2.1	<b>1.1</b>	1.0	1.1	0.0	<b>1.0</b>	0.9	1.1
2012 average	<b>1.4</b>	1.4	<b>1.1</b>	0.3	1.1	0.0	<b>1.1</b>	0.1	1.4
October-2012	<b>0.0</b>	0.0	<b>0.0</b>	0.0	0.0	0.0	<b>-0.2</b>	-1.3	0.0
November-2012	<b>-0.1</b>	-0.1	<b>0.0</b>	0.0	0.0	0.0	<b>0.6</b>	-0.2	0.8
December-2012	<b>0.0</b>	0.0	<b>0.0</b>	0.0	0.0	0.0	<b>0.0</b>	0.3	0.0
January-2013	<b>0.0</b>	0.0	<b>0.0</b>	0.0	0.0	0.0	<b>0.5</b>	2.7	0.0
February-2013	<b>0.0</b>	0.0	<b>-0.3</b>	0.0	-0.3	0.0	<b>0.2</b>	1.0	0.0
March-2013	<b>14.8</b>	14.8	<b>-0.2</b>	0.6	-0.2	0.0	<b>0.7</b>	1.0	0.7
April-2013	<b>-0.3</b>	-0.3	<b>4.6</b>	0.0	4.7	0.0	<b>4.2</b>	-0.2	5.3
May-2013	<b>-0.2</b>	-0.2	<b>10.3</b>	0.0	10.6	0.0	<b>-0.9</b>	-5.7	0.2
June-2013	<b>4.1</b>	4.1	<b>0.0</b>	0.0	0.0	0.0	<b>0.6</b>	-0.1	0.8
July-2013	<b>0.0</b>	0.0	<b>0.1</b>	5.3	0.0	0.0	<b>0.2</b>	0.9	0.0
August-2013	<b>5.3</b>	5.3	<b>0.0</b>	-1.3	0.0	0.0	<b>-0.8</b>	-4.3	0.0
September-2013	<b>6.9</b>	6.9	<b>0.0</b>	0.1	0.0	0.0	<b>8.8</b>	-0.6	11.0
October-2013	<b>-p 2.7</b>	-p 2.7	<b>p 2.8</b>	p 0.1	p 2.9	p 0.0	<b>p 1.4</b>	p 2.4	p 1.2

*p: provisional*

**Table 10: Manufacturing: Monthly Change Rates for October 2012 - October 2013 (%)**
*contd.*

Year / Month	Manufacture of other non-metallic min. products	Manufacture of non-metallic mineral products n.e.c.	Manufacture of basic metals	Manufacture of basic iron and steel	Manufacture of basic precious and non-ferrous metals	Manufacture of fabricated metal products, ...	Manufacture of structural metal products, tanks, reservoirs ...	Manufacture of other fabricated metal products ...	Manufacture of machinery ... n.e.c.	Manufacture of special-purpose machinery
ISIC	D26	D269	D27	D271	D272	D28	D281	D289	D29	D292
weight	8.20	8.20	5.02	2.02	2.65	3.70	1.55	2.15	0.42	0.42
2007 average	<b>1.0</b>	1.0	<b>0.9</b>	2.1	0.3	<b>1.4</b>	1.8	1.1	<b>0.0</b>	0.0
2008 average	<b>1.5</b>	1.5	<b>2.1</b>	3.5	1.1	<b>2.2</b>	1.3	2.9	<b>6.8</b>	6.8
2009 average	<b>2.1</b>	2.1	<b>-0.2</b>	-0.6	0.1	<b>2.0</b>	2.7	1.4	<b>3.8</b>	3.8
2010 average	<b>0.1</b>	0.1	<b>1.5</b>	3.1	1.7	<b>0.0</b>	-0.1	0.1	<b>0.0</b>	0.0
2011 average	<b>0.7</b>	0.7	<b>0.5</b>	-0.2	0.2	<b>0.8</b>	1.5	0.4	<b>3.2</b>	3.2
2012 average	<b>2.7</b>	2.7	<b>1.3</b>	1.1	1.6	<b>1.7</b>	1.7	1.7	<b>0.0</b>	0.0
October-2012	<b>-0.2</b>	-0.2	<b>2.2</b>	0.0	3.9	<b>4.0</b>	3.7	4.2	<b>0.0</b>	0.0
November-2012	<b>0.0</b>	0.0	<b>-0.1</b>	0.0	-0.2	<b>-0.1</b>	0.0	-0.2	<b>0.0</b>	0.0
December-2012	<b>0.0</b>	0.0	<b>0.0</b>	0.0	0.0	<b>-0.2</b>	-0.5	0.0	<b>0.0</b>	0.0
January-2013	<b>0.0</b>	0.0	<b>0.0</b>	0.0	0.1	<b>0.2</b>	0.0	0.4	<b>0.0</b>	0.0
February-2013	<b>-0.1</b>	-0.1	<b>0.0</b>	0.0	0.0	<b>0.0</b>	-0.1	0.1	<b>0.0</b>	0.0
March-2013	<b>0.2</b>	0.2	<b>-0.5</b>	2.0	-2.3	<b>-0.6</b>	0.0	-1.1	<b>0.0</b>	0.0
April-2013	<b>1.1</b>	1.1	<b>0.1</b>	0.0	0.2	<b>1.5</b>	2.0	1.1	<b>0.0</b>	0.0
May-2013	<b>0.1</b>	0.1	<b>0.2</b>	0.0	0.3	<b>-0.2</b>	-0.4	-0.1	<b>0.0</b>	0.0
June-2013	<b>0.0</b>	0.0	<b>0.3</b>	0.0	0.5	<b>0.1</b>	-0.2	0.3	<b>0.0</b>	0.0
July-2013	<b>0.3</b>	0.3	<b>-0.8</b>	-1.1	-0.6	<b>3.8</b>	8.7	0.3	<b>76.0</b>	76.0
August-2013	<b>-0.8</b>	-0.8	<b>1.2</b>	2.6	0.1	<b>0.1</b>	0.0	0.1	<b>0.0</b>	0.0
September-2013	<b>0.0</b>	0.0	<b>0.1</b>	0.0	0.1	<b>1.8</b>	1.1	2.3	<b>0.0</b>	0.0
October-2013	<b>p 0.8</b>	p 0.8	<b>p 0.4</b>	p 0.1	p 0.6	<b>p 2.0</b>	p 0.5	p 3.1	<b>p 0.0</b>	p 0.0

*p: provisional*

**Table 10: Manufacturing: Monthly Change Rates for October 2012 - October 2013 (%)**

*contd.*

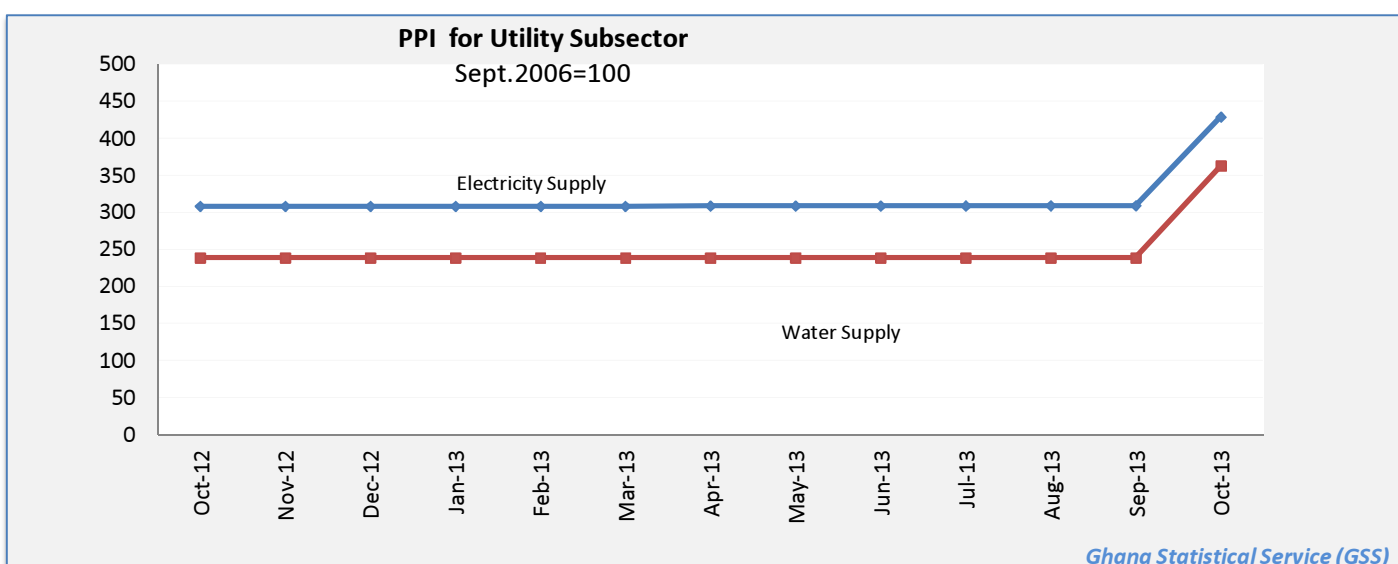
Year / Month	Manufacture of electrical machinery and apparatus n.e.c.	Manufacture of insulated wire and cable	Manufacture of motor vehicles, trailers and semi-trailers	Manufacture of bodies for motor vehicles, trailers and semi-trailers	Manufacture of furniture; manufacturing n.e.c.	Manufacture of furniture	Manufacturing n.e.c.
<i>ISIC</i>	<b>D31</b>	<i>D313</i>	<b>D34</b>	<i>D342</i>	<b>D36</b>	<i>D361</i>	<i>D369</i>
<i>weight</i>	<b>0.41</b>	0.41	<b>0.05</b>	0.05	<b>2.44</b>	2.33	0.11
2007 average	<b>0.6</b>	0.6	<b>2.8</b>	2.8	<b>1.8</b>	1.8	2.5
2008 average	<b>0.0</b>	0.0	<b>1.2</b>	1.2	<b>1.8</b>	1.8	1.9
2009 average	<b>0.6</b>	0.6	<b>2.1</b>	2.1	<b>1.3</b>	1.4	0.2
2010 average	<b>2.0</b>	2.0	<b>0.1</b>	0.1	<b>0.2</b>	0.2	1.7
2011 average	<b>2.3</b>	2.3	<b>0.2</b>	0.2	<b>2.0</b>	1.9	3.4
2012 average	<b>0.9</b>	0.9	<b>1.0</b>	1.0	<b>1.0</b>	1.0	0.8
October-2012	<b>0.0</b>	0.0	<b>0.7</b>	0.7	<b>-0.2</b>	-0.2	0.0
November-2012	<b>0.0</b>	0.0	<b>-1.6</b>	-1.6	<b>0.0</b>	0.0	0.0
December-2012	<b>0.0</b>	0.0	<b>-0.1</b>	-0.1	<b>1.6</b>	1.6	1.4
January-2013	<b>0.0</b>	0.0	<b>4.5</b>	4.5	<b>0.1</b>	0.1	0.0
February-2013	<b>0.0</b>	0.0	<b>1.0</b>	1.0	<b>0.2</b>	0.2	1.1
March-2013	<b>0.0</b>	0.0	<b>-1.7</b>	-1.7	<b>14.9</b>	15.4	-0.1
April-2013	<b>0.0</b>	0.0	<b>0.6</b>	0.6	<b>2.1</b>	1.9	10.5
May-2013	<b>-6.0</b>	-6.0	<b>1.6</b>	1.6	<b>2.2</b>	1.7	19.1
June-2013	<b>0.0</b>	0.0	<b>2.8</b>	2.8	<b>0.1</b>	0.1	0.4
July-2013	<b>0.5</b>	0.5	<b>3.7</b>	3.7	<b>5.9</b>	6.1	0.0
August-2013	<b>0.0</b>	0.0	<b>1.0</b>	1.0	<b>0.0</b>	0.0	0.4
September-2013	<b>0.0</b>	0.0	<b>2.1</b>	2.1	<b>0.0</b>	0.0	0.0
October-2013	<b>p 0.0</b>	p 0.0	<b>p 3.0</b>	p 3.0	<b>p 1.5</b>	p 1.5	p 3.6

*p: provisional*

**Table 11: Utilities: Producer Price Index (Sept 2006=100) for October 2012 -October 2013**

Year / Month	Electricity and water supply (Utilities)	Electricity supply	Production, transmission and distribution of electricity	Water supply	Collection, purification and distribution of water
ISIC	E	E40	E401	E41	E410
weight	100.00	93.25	93.25	6.75	6.75
2007 average	115.3	113.7	113.7	133.3	133.3
2008 average	157.1	154.8	154.8	193.0	193.0
2009 average	159.4	157.2	157.2	193.0	193.0
2010 average	226.0	227.6	227.6	208.6	208.6
2011 average	281.3	285.8	285.8	225.1	225.1
2012 average	301.8	306.8	306.8	238.6	238.6
October-2012	303.2	308.4	308.4	238.6	238.6
November-2012	303.1	308.3	308.3	238.6	238.6
December-2012	303.1	308.3	308.3	238.6	238.6
January-2013	303.2	308.3	308.3	238.6	238.6
February-2013	303.2	308.3	308.3	238.6	238.6
March-2013	303.2	308.4	308.4	238.6	238.6
April-2013	303.3	308.5	308.5	238.6	238.6
May-2013	303.5	308.6	308.6	238.6	238.6
June-2013	303.7	308.8	308.8	238.6	238.6
July-2013	303.7	308.9	308.9	238.6	238.6
August-2013	303.7	308.9	308.9	238.6	238.6
September-2013	303.8	309.0	309.0	238.6	238.6
October-2013	<b>p 424.2</b>	<b>p 428.9</b>	<b>p 428.9</b>	<b>p 362.7</b>	<b>p 362.7</b>

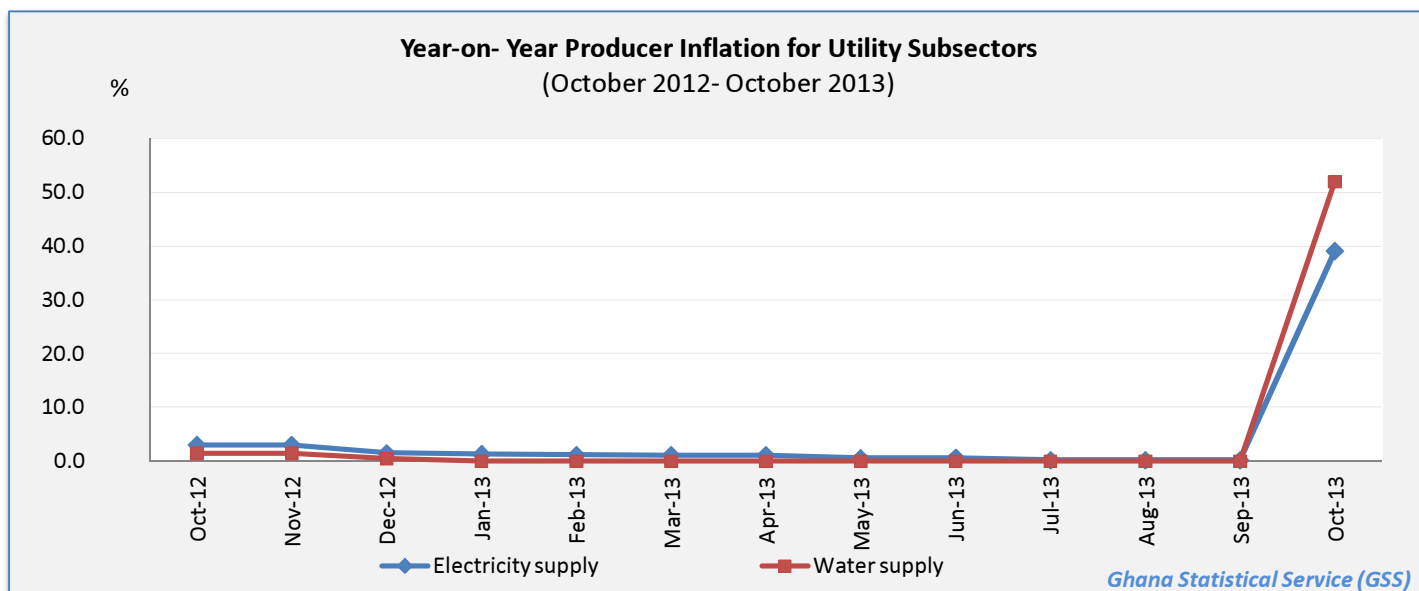
*p: provisional*



**Table 12: Utilities: Yearly Change Rates for October 2012 - October 2013 (%)**

Year / Month	Electricity and water supply (Utilities)	Electricity supply	Production, transmission and distribution of electricity	Water supply	Collection, purification and distribution of water
<i>ISIC</i>	<i>E</i>	<i>E40</i>	<i>E401</i>	<i>E41</i>	<i>E410</i>
<i>weight</i>	<b>100.00</b>	<b>93.25</b>	<b>93.25</b>	<b>6.75</b>	<b>6.75</b>
2008 average	<b>39.4</b>	<b>39.2</b>	39.2	<b>50.9</b>	50.9
2009 average	<b>1.4</b>	<b>1.6</b>	1.6	<b>0.0</b>	0.0
2010 average	<b>41.7</b>	<b>44.7</b>	44.7	<b>8.1</b>	8.1
2011 average	<b>32.7</b>	<b>34.8</b>	34.8	<b>8.2</b>	8.2
2012 average	<b>7.4</b>	<b>7.5</b>	7.5	<b>6.1</b>	6.1
October-2012	<b>2.9</b>	<b>3.0</b>	3.0	<b>1.5</b>	1.5
November-2012	<b>2.9</b>	<b>3.0</b>	3.0	<b>1.5</b>	1.5
December-2012	<b>1.5</b>	<b>1.5</b>	1.5	<b>0.5</b>	0.5
January-2013	<b>1.2</b>	<b>1.3</b>	1.3	<b>0.0</b>	0.0
February-2013	<b>1.1</b>	<b>1.1</b>	1.1	<b>0.0</b>	0.0
March-2013	<b>1.0</b>	<b>1.1</b>	1.1	<b>0.0</b>	0.0
April-2013	<b>1.0</b>	<b>1.1</b>	1.1	<b>0.0</b>	0.0
May-2013	<b>0.5</b>	<b>0.5</b>	0.5	<b>0.0</b>	0.0
June-2013	<b>0.6</b>	<b>0.6</b>	0.6	<b>0.0</b>	0.0
July-2013	<b>0.2</b>	<b>0.2</b>	0.2	<b>0.0</b>	0.0
August-2013	<b>0.2</b>	<b>0.2</b>	0.2	<b>0.0</b>	0.0
September-2013	<b>0.2</b>	<b>0.2</b>	0.2	<b>0.0</b>	0.0
October-2013	<b>p 39.9</b>	<b>p 39.1</b>	p 39.1	<b>p 52.0</b>	p 52.0

*p: provisional*



**Table 13: Utilities: Monthly Change Rates for October 2012 - October 2013 (%)**

Year / Month	Electricity and water supply (Utilities)	Electricity supply	Production, transmission and distribution of electricity	Water supply	Collection, purification and distribution of water
<i>ISIC</i>	<i>E</i>	<i>E40</i>	<i>E401</i>	<i>E41</i>	<i>E410</i>
<i>weight</i>	<b>100.00</b>	<b>93.25</b>	<b>93.25</b>	<b>6.75</b>	<b>6.75</b>
2007 average	<b>4.1</b>	<b>4.0</b>	4.0	<b>6.5</b>	6.5
2008 average	<b>0.1</b>	<b>0.1</b>	0.1	<b>0.0</b>	0.0
2009 average	<b>0.1</b>	<b>0.1</b>	0.1	<b>0.0</b>	0.0
2010 average	<b>6.0</b>	<b>6.4</b>	6.4	<b>1.2</b>	1.2
2011 average	<b>0.7</b>	<b>0.8</b>	0.8	<b>0.7</b>	0.7
2012 average	<b>0.1</b>	<b>0.1</b>	0.1	<b>0.0</b>	0.0
October-2012	<b>0.0</b>	<b>0.0</b>	0.0	<b>0.0</b>	0.0
November-2012	<b>0.0</b>	<b>0.0</b>	0.0	<b>0.0</b>	0.0
December-2012	<b>0.0</b>	<b>0.0</b>	0.0	<b>0.0</b>	0.0
January-2013	<b>0.0</b>	<b>0.0</b>	0.0	<b>0.0</b>	0.0
February-2013	<b>0.0</b>	<b>0.0</b>	0.0	<b>0.0</b>	0.0
March-2013	<b>0.0</b>	<b>0.0</b>	0.0	<b>0.0</b>	0.0
April-2013	<b>0.0</b>	<b>0.0</b>	0.0	<b>0.0</b>	0.0
May-2013	<b>0.0</b>	<b>0.0</b>	0.0	<b>0.0</b>	0.0
June-2013	<b>0.1</b>	<b>0.1</b>	0.1	<b>0.0</b>	0.0
July-2013	<b>0.0</b>	<b>0.0</b>	0.0	<b>0.0</b>	0.0
August-2013	<b>0.0</b>	<b>0.0</b>	0.0	<b>0.0</b>	0.0
September-2013	<b>0.0</b>	<b>0.0</b>	0.0	<b>0.0</b>	0.0
October-2013	<b>p 39.7</b>	<b>p 38.8</b>	p 38.8	<b>p 52.0</b>	p 52.0

*p: provisional*

